

SEATING SYSTEMS



A DewertOkin Technology Brand



**Innovative solutions
for drive & system technology**

www.dewertokin.com

System solutions for Seating applications

Adjustable armchairs with motorized back and foot sections are currently quite popular: Reclining television armchairs and other reclining seating are expected to be very comfortable. Stand-up chairs, which are particularly relevant for seniors, have a motorized adjustable stand-up assistance feature, which helps to promote mobility. Modern motorized armchairs are being configured with more special features, such as Bluetooth or memory functionality, that provide real benefits for their users.

OKIN is a specialist in actuator and system technology for motorized chair and sofa applications, with more than 20 years of experience in the seating industry. We not only manufacture components such as actuators, control units and control keypads, but also design and implement tailor-made customized projects. In the joint planning phase, we custom-design the entire system and program the required functional sequences to match the customer's requirements. Our customers also benefit from our speedy delivery times and global sales network that is able to help them with any service issues.

Compact actuators for adjustable armchairs

The elegant design of many modern adjustable armchairs leaves little room for electrical components. That is why OKIN actuators have

a very compact construction. With their minimal installation dimensions, they enable a large lifting stroke even in confined spaces. The actuators operate with a pushing force of up to 6,000 N – thus, despite their compact design, they are suitable for a wide range of applications and heavy-duty tasks. They also feature outstanding reliability and a gentle adjustment mechanism for the height, back or foot section.

Control units and control keypads: a wide range of functions for adjustable armchairs

Intelligent control units are essential for implementing customized motion profiles and extended functionality. The CU165 control unit is capable of connecting with up to four OKIN actuators. The patented ripple count technology makes it possible to save customized memory positions for OKIN actuators without Hall sensors. The built-in bi-directional 2.4 GHz radio control enables wireless operations for all functions thanks to our patented, interference-free wireless transmissions. We have a wide selection of matching wireless hand-held transmitters for adjustable armchairs and many optional components (USB chargers, etc.).

The CU165 and many other OKIN control units have built-in Bluetooth so that the motorized armchairs can be operated using mobile devices.

Product overview

Single drives

6



Cinema

22



Handsets

12



Metal to Floor

26



Chair controls

14



Lifter

32



Ridge & Infinite Family

16



Wood to Floor

34



Control units

18



Headrests

38



Accessories

20



Relax Chair

40



Business solutions

Reliable technology for adjustable seating furniture

Electrically adjustable chairs and sofas ensure outstanding comfort in everyday life and turn your own living-room into an oasis of well-being. The key features for this type of seating furniture are the smooth changes in position and the excellent user-friendliness. This is achieved by taking advantage of the intelligent components provided by OKIN. The OKIN brand encompasses a broad portfolio for users – with products that can be used for mid-range and high-end applications.



Residential Seating

Today, adjustable seating furniture is an essential part of a comfortable and at the same time ergonomic interior design. Whether relax armchair, relax sofa or other variants: Comfort furniture is comfortable and versatile seating that,

thanks to modern technology, offers much more than just a comfortable sitting experience. DewertOkin develops for this from the drive up to the hand switch demand-oriented solutions according to all requirements.



Relax chair

Electrically adjustable armchairs are becoming increasingly popular. OKIN's drive and system technology includes the right components for comfortable seating furniture that invites you to relax and unwind.



Lifter chair

Senior citizens and people with physical disabilities in particular need help to ensure mobility in everyday life. Drive and fitting technology from OKIN is ideally suited for electrically adjustable armchairs that have an integrated stand-up aid.



Cinema

Modern, high-quality cinema seats require equally high-performance mechanisms – OKIN understands the importance of this. In the area of mechanisms technology, we offer a diverse range of products that cover a wide variety of cinema requirements such as drives, controls, operating elements and accessories for adjustable cinema seats.

Single drives

OKIN single drives have a very compact construction and allow an elegant design of adjustable seating furniture that leaves little room for electrical components. With their minimal installation dimensions, they enable a large lifting stroke even in confined spaces. The drives operate with a push force of up to 6,000 N – thus, despite their compact design, they are suitable for a wide range of applications and heavy-duty tasks. They also feature outstanding reliability, a low noise level and a gentle adjustment mechanism for the height, back or foot section.



JLDQ.20



Load capacity (max.)	4,000 N
Motor voltage	24 – 29 V DC motors, maintenance-free
Fitting dimensions (min.)	130 mm + stroke
Adjustment speed (max., unloaded)	52 mm/s
Stroke length (max.)	500 mm
Features	Suitable for all kinds of sofas and lounge chairs

JLDQ14B



Load capacity (max.)	3,000 N
Motor voltage	24 – 29 V DC motors, maintenance-free
Fitting dimensions (min.)	≥ 130 mm + stroke
Adjustment speed (max., unloaded)	35 mm/s
Stroke length (max.)	350 mm (+/- 2 mm)
Features	<ul style="list-style-type: none"> – Small and compact design with optimized performance – Requires minimal space

Microdrive 3



Load capacity (max.)	4,000 N
Motor voltage	24 – 29 V DC motors, maintenance-free
Fitting dimensions (min.)	105 mm + stroke
Adjustment speed (max., unloaded)	35 mm/s
Stroke length (max.)	350 mm
Features	<ul style="list-style-type: none">– All-metal housing– Adjustable gear clevis (0° and 90°)

Alphadrive 5



Load capacity (max.)	6,000 N
Motor voltage	24 – 29 V DC motors, maintenance-free
Fitting dimensions (min.)	130 mm + stroke
Adjustment speed (max., unloaded)	35 mm/s
Stroke length (max.)	350 mm
Features	<ul style="list-style-type: none">– Compact fitting dimensions– High load capacity

JLDQ.19



Load capacity (max.)	6,000 N
Motor voltage	24 – 29 V DC motors, maintenance-free
Fitting dimensions (min.)	150 mm + stroke
Adjustment speed (max., unloaded)	42 mm/s
Stroke length (max.)	500 mm +/- 2 mm
Features	<ul style="list-style-type: none">– Compact installation dimensions– Powerful adjustment forces

JLDQ.19B



Load capacity (max.)	4,000 N
Motor voltage	24 – 29 V DC motors, maintenance-free
Fitting dimensions (min.)	150 mm + stroke (+/- 2 mm)
Adjustment speed (max., unloaded)	56 mm/s
Stroke length (max.)	500 mm +/- 2 mm
Features	<ul style="list-style-type: none">– Compact installation dimensions– Powerful adjustment forces– Fast adjustment speed

JLDQ.18



Load capacity (max.)	3,000 N
Motor voltage	24 – 29 V DC motors, maintenance-free
Fitting dimensions (min.)	123 mm + stroke (+/- 2 mm)
Adjustment speed (max., unloaded)	52 mm/s
Stroke length (max.)	500 mm +/- 2 mm
Features	<ul style="list-style-type: none">- Smallest installation dimension of 123 mm- Low weight

JLDQ27



Load capacity (max.)	6,000 N
Motor voltage	24 – 29 V DC motors, maintenance-free
Fitting dimensions (min.)	≥ 130 mm + stroke
Adjustment speed (max., unloaded)	51 mm/s
Stroke length (max.)	500 mm
Features	<ul style="list-style-type: none">- Hall sensor- Powerful adjustment forces

JLDQ25



Load capacity (max.)	2,000 N
Motor voltage	24 – 29 V DC motors, maintenance-free
Fitting dimensions (min.)	≥ 90 mm + stroke
Adjustment speed (max., unloaded)	10.4 mm/s
Stroke length (max.)	300 mm
Features	<ul style="list-style-type: none">- Compact installation and housing dimensions- Low weight

JLDQ26



Load capacity (max.)	1,500 N
Motor voltage	24 – 29 V DC motors, maintenance-free
Fitting dimensions (min.)	≥ 102 mm + stroke
Adjustment speed (max., unloaded)	34 mm/s
Stroke length (max.)	300 mm
Features	<ul style="list-style-type: none">- Compact installation and housing dimensions- Low weight

Handsets

OKIN RF handsets stand out in particular for their elegant design: The screwless housing is appealing and flat, ensuring an optimal handling at all times. Thanks to their responsive buttons and high value housing surfaces, the handsets are ideal for seating applications. Equipped with the OKIN bi-directional 2.4 GHz radio control, the input of commands is always accurate and reliable.



Wired handsets

Atlas



SPLine



Number of keys	2 – 9	2 – 7
Housing colour	– Bottom housing section: black – Top housing section: silver	Housing colour (top/bottom) black/black
Features	– Blue backlit lighting – Function LED – USB Socket – Optional home button	– Blue backlit lighting – Function LED

Wireless handsets

RF Eco+



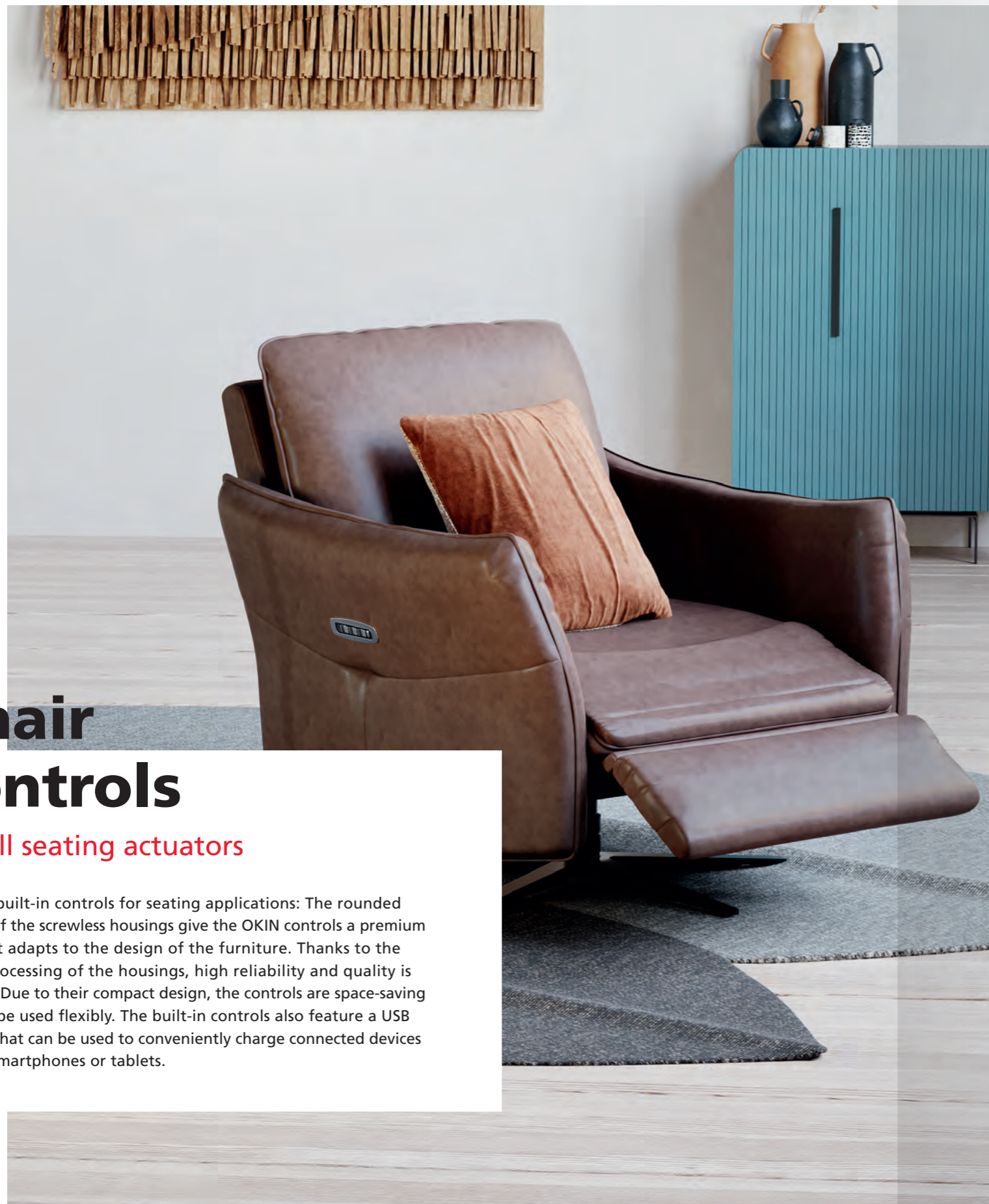
RF Eco



RF Topline



Number of keys	2 – 10	2 or 6	7 – 15
Connection	RF technology 2.4 GHz Bidirectional	RF technology 2.4 GHz Bidirectional	RF technology 2.4 GHz Bidirectional
Compatibility	Combinable with all OKIN seating systems	Combinable with all OKIN seating systems	Combinable with all OKIN seating systems
Option	– Customizable buttons – Customer-specific printings	– Customizable buttons – Customer-specific printings	– Customizable buttons – Customer-specific printings
Certification	RED	RED	RED



Chair controls

For all seating actuators

Elegant built-in controls for seating applications: The rounded corners of the screwless housings give the OKIN controls a premium look that adapts to the design of the furniture. Thanks to the stable processing of the housings, high reliability and quality is ensured. Due to their compact design, the controls are space-saving and can be used flexibly. The built-in controls also feature a USB charger that can be used to conveniently charge connected devices such as smartphones or tablets.

Chair Control Mira



Chair Control SeeSaw



Chair Control MP



	Chair Control Mira	Chair Control SeeSaw	Chair Control MP
Control Unit	Direct control	Direct control	Direct control
Color	Black (buttons: metal)	Black	Metal housing
Buttons	2 – 4	4 (2 rocker switches)	2 – 4
Protection type	IP20	IP20	IP20
Built-in USB charger	Yes	Yes	Yes

Ridge & Infinite Family

Equipped with up to seven buttons, a home button and an electroplated cover, the Ridge and Infinite chair controls provide users with optimum haptic feedback when adjusting the recliner and other seating furniture. The keys and cover frame of the built-in handset have an elegant brush metal look while the design optimized housing has no visible screw holes and is equipped with an integrated USB charger. The user friendly switch buttons allow an intuitive positioning of head and foot sections as well as lumbar adjustment.

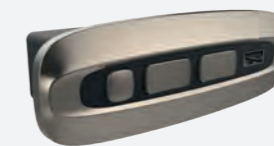


Ridge Family New switch

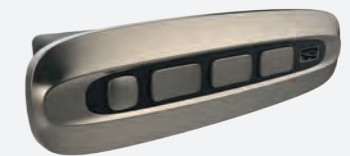
JLDK.55.02.01
With USB



JLDK.55.05.01
With USB & home button



JLDK.55.07.01
With USB & home button & Lumbar



Features and Benefits

- High quality design with neat appearance
- Suitable for recliners, headrests and lumbar
- With home button
- The cover is electroplated with wire brush effect

Low Power Consumption
on USB plug

Stand-by consumption
is less than 50µA

Infinite Family New switch

JLDK.54.05.02
With USB & home button



Backlight option

JLDK.54.07.01
With USB & home button



Backlight option

Features and Benefits

- Suitable for recliners, headrests and lumbar
- With home button
- Separated area for switch buttons and the USB plug
- User-friendly
- The cover is electroplated with wire brush effect

Low Power Consumption
on USB plug

Stand-by consumption
is less than 50µA

Control units

Intelligent control units are essential for implementing customized motion profiles and extended functionality. They are capable of connecting with up to four OKIN drives and various accessories like an external power supply. The patented brush-sparking evaluation function makes it possible to save customized memory positions for OKIN drives without Hall sensors. All OKIN control units have built-in Bluetooth® so that motorized armchairs can be operated using mobile devices.



CU155+



Connection	Integrated 2.4 GHz RF receiver Bidirectional, interference-free Integrated Bluetooth® receiver
No. of actuators	Up to 4 actuators
Mounting options	Mounting plate
Safety	Overload current switch-off
Connecting cable	Attached supply cable
Features	<ul style="list-style-type: none"> - Can be combined with OKIN Powerpack - Can be combined with all OKIN wireless handsets (2.4 GHz bidirectional)

CU165



Connection	Integrated 2.4 GHz RF receiver Bidirectional, interference-free Integrated Bluetooth® receiver
No. of actuators	Up to 4 actuators (with hall sensors and PWM-control)
Mounting options	Mounting plate
Safety	Overload current switch-off
Connecting cable	Attached supply cable
Features	<ul style="list-style-type: none"> - Customized programming - Can be combined with OKIN Powerpack - Can be combined with all OKIN wireless handsets (2.4 GHz bidirectional)

Accessories

External power supply

The external OKIN power supplies PD21 and PD22 combine space-saving design with high performance. They can be combined with all OKIN actuators and are therefore ideal for a wide range of seating applications. Thanks to the electronic switching power supply technology (SMPS), the external power supplies have a higher efficiency, are lighter and more compact. The external power supplies provide a constant output voltage independent of the input voltage. They also features very low standby power consumption, complies with energy efficiency class VI and comply with the Ecodesign Directive 2009/125/EC.



PD21/22



Control	SMPS
Power supply	Wide input voltage range 100 – 240 V/AC
Output voltage	29 V DC constant voltage output
Connecting cable	Pluggable
Indicators	LED operating status indication (green)
Safety	<ul style="list-style-type: none"> - NTC temperature sensor - Primary fuse - Overload protection - Overcurrent switch-off - Short-circuit-proof output

PP1800



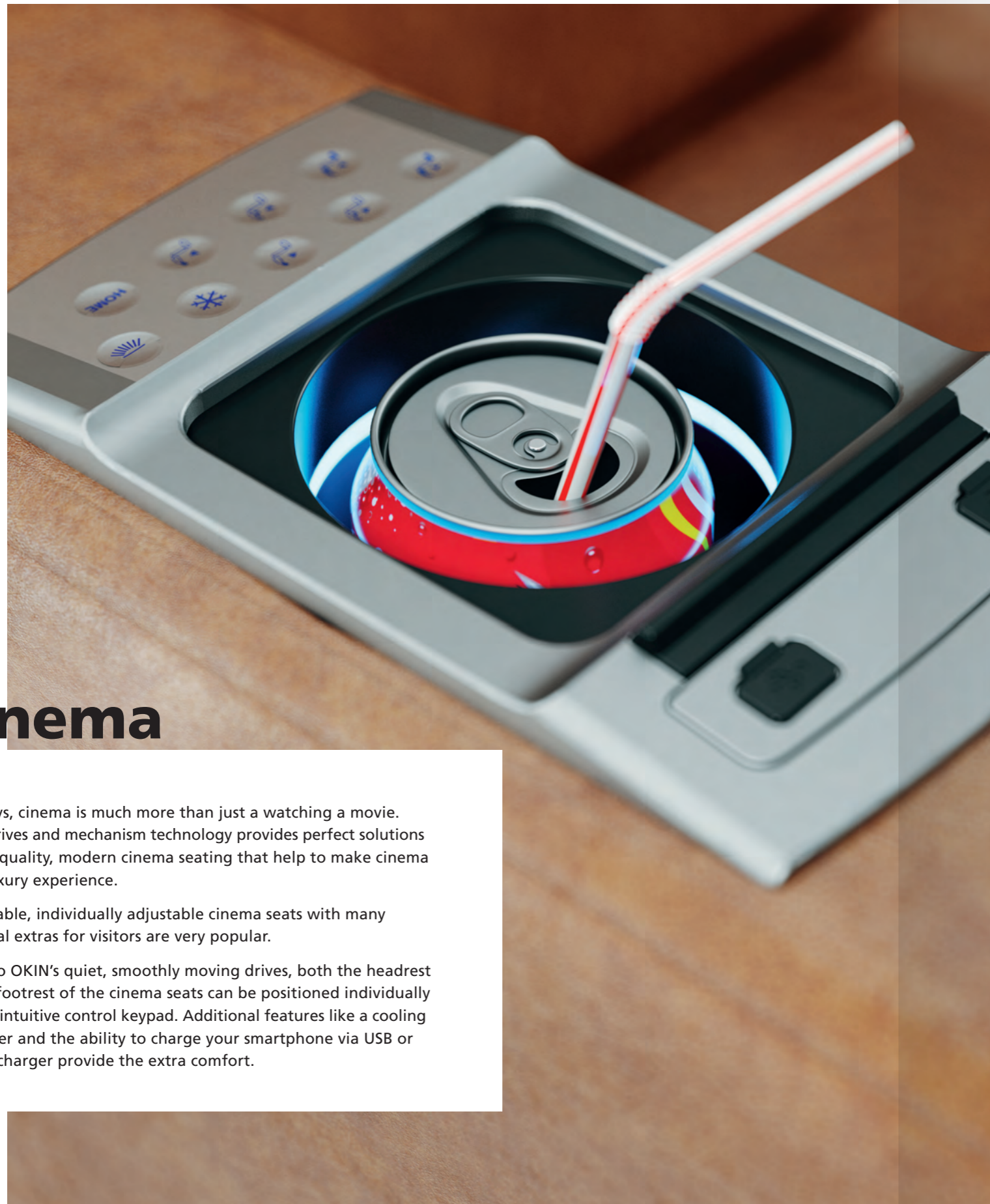
Control	Power pack (Li-Ion)
Capacity	1800mAh
Output voltage	29 V DC
Connecting cable	2 x LSP Socket and Plug
Indicators	LED operating status indication (orange and green)
Safety	<ul style="list-style-type: none"> - Overheating protection - Overload protection - Overload current switch-off - Short-circuit proof - Deep-discharge protection - Acoustic warning signal

Cinema







Nowadays, cinema is much more than just a watching a movie. OKIN's drives and mechanism technology provides perfect solutions for high-quality, modern cinema seating that help to make cinema a true luxury experience.

Comfortable, individually adjustable cinema seats with many additional extras for visitors are very popular.

Thanks to OKIN's quiet, smoothly moving drives, both the headrest and the footrest of the cinema seats can be positioned individually using an intuitive control keypad. Additional features like a cooling cup holder and the ability to charge your smartphone via USB or wireless charger provide the extra comfort.



Multi-Function Cup Holder

-  Motor Control
-  Cooling Cupholder
-  Ambient Light
-  USB Charging
-  Wireless Charging
-  Phone Holder



CU165



Connection	Integrated 2.4 GHz RF receiver Bidirectional, interference-free Integrated Bluetooth® receiver
No. of actuators	Two actuators
Mounting options	Mounting plate
Safety overload	current switch-off
Connecting cable	Attached supply cable
Features	<ul style="list-style-type: none"> - Mass opener and closer - Connection for two motors - Anti-entrapment system

Smart technology for adjustable seating furniture

One-stop shopping for intelligent furniture

With more than 20 years of experience in the furniture industry, DewertOkin is the world's leading manufacturer of drive and system technology for motorized seating applications. As a supplement to its established product portfolio, DewertOkin develops mechanical systems for adjustable upholstered furniture under the brand name OKIN.

System solutions by DewertOkin guarantee a "one-stop shop" experience with numerous advantages. Whether it's comfort chairs for home furnishings or sophisticated cinema seats – DewertOkin supplies actuators, mechanisms, control units, operating elements and mechanism technology from a single source.

Wide range of functions

Mechanical components made by OKIN offer numerous smart functions with a true added value for the user. The anti-entrapment system is a patented feature which will stop the closing movement of the mechanism in case of any dangerous situation and is easily assembled to existing applications. The occupancy sensor uses capacitive technology that determines whether a seat is occupied by a person or not. This information could be used for several applications like automatic activation or deactivation, system wake up or sleep, and any other functions related to any connected device.

The Cinema seating control unit is an all-inclusive solution for the modern cinema working with one and two actuator applications. The cinema seats can be driven intuitively by the end user through a wireless local switch connected to the control unit to reach the desired position. Additionally, wireless remote mass opening and closing of all seats is possible to facilitate the staff's work before and after a show.

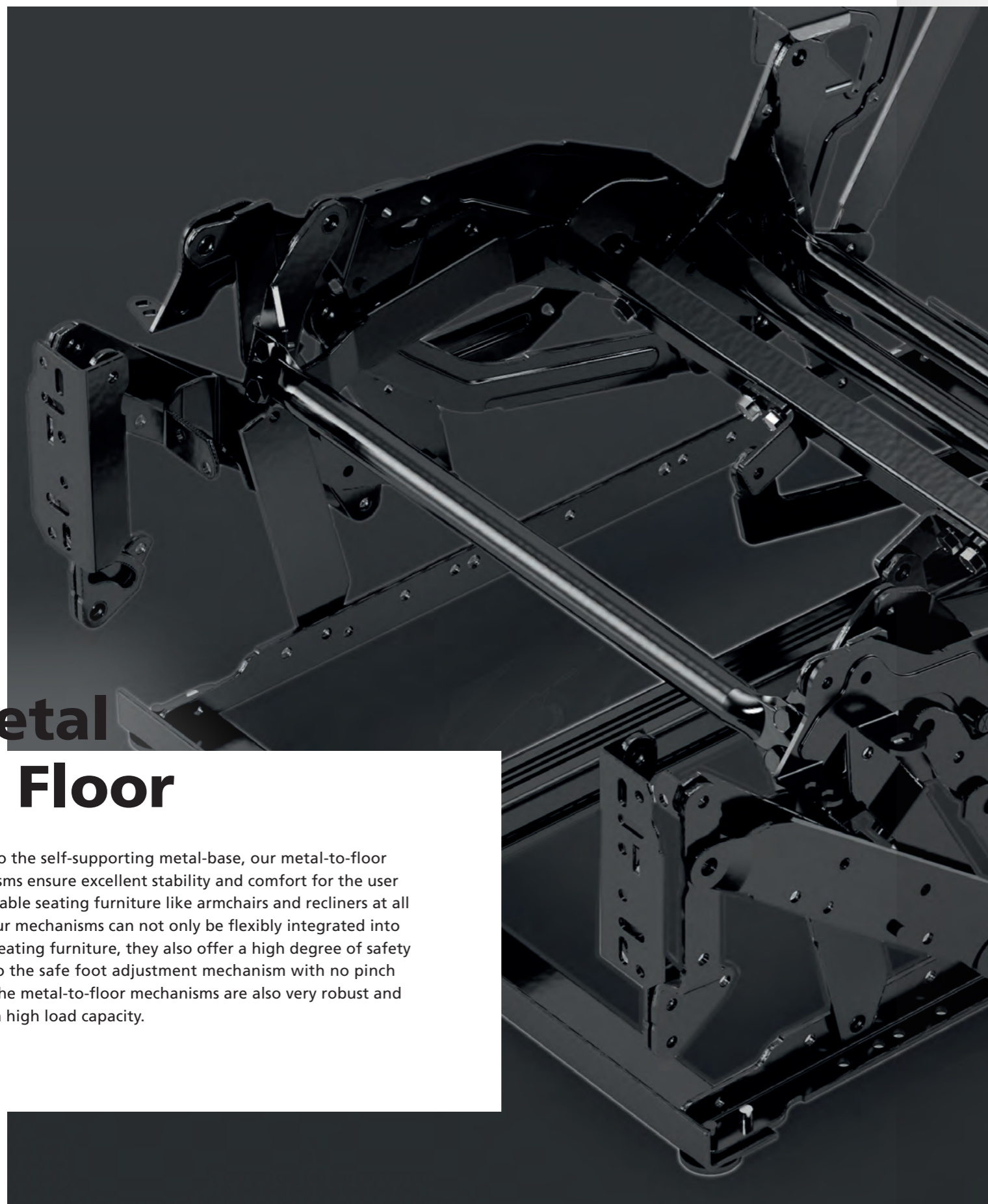
Mechanical components and drive technology combined

Combined with DewertOkin actuator technology, users receive powerful systems for modern adjustable upholstered furniture that can satisfy the highest demands. OKIN offers a wide product portfolio of single actuators – from the very compact MICRODRIVE 3 to the powerful JLDQ.19 with 6,000 newton of push force. DewertOkin is able to implement smooth and fast adjustments for mechanism applications because of its requirements-based coordination of recliner mechanisms and actuators. A wide range of handsets and operating elements ensures convenient operations. The wireless variants feature integrated RF and Bluetooth connectivity, so that upholstered furniture can be adjusted using radio hand transmitters, apps or voice control. Users can operate their furniture conveniently via smartphone or tablet. Our systems can be supplemented by accessories including integrated modular power packs for battery-powered supply.

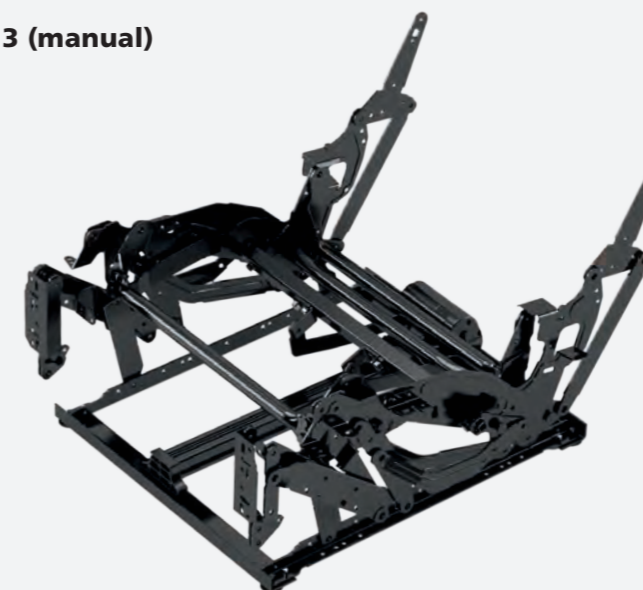


Metal to Floor

Thanks to the self-supporting metal-base, our metal-to-floor mechanisms ensure excellent stability and comfort for the user of adjustable seating furniture like armchairs and recliners at all times. Our mechanisms can not only be flexibly integrated into various seating furniture, they also offer a high degree of safety thanks to the safe foot adjustment mechanism with no pinch points. The metal-to-floor mechanisms are also very robust and feature a high load capacity.



9013D + 9013 (manual)



Metal to Floor

Wall away

159 kg
Maximum Load

Circles
25000

Headrest and Lumbar Option Available

Features and Benefits

- Wall-away function
- The armrest follows the movement of the seat
- Available in Manual or Power versions
- Available with cable/handle/lever
- Available in different sizes
- Safe footrest levers with no pinch points

Application

Single



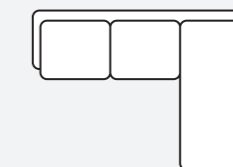
Loveseat



Sofa



Sectional



9718DX Mechatronic



Scan and view
in Augmented
Reality

- Metal to Floor
- Wall away
- 159 kg Maximum Load
- Circles 25000
- Headrest and Lumbar Option Available

Features and Benefits

- Available in different sizes
- Integrated power headrest and lumbar
- Actuators all mounted at the center of the back for a steady movement

Application

Single



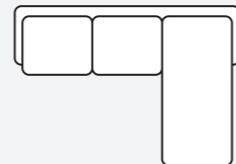
Loveseat



Sofa



Sectional



Options

2528 Headrest & Power lumbar



9011D Zero Gravity



- Metal to Floor
- Zero Gravity
- 159 kg Maximum Load
- Circles 25000
- Headrest and Lumbar Option Available

Features and Benefits

- Ingenious design to prevent the deformation
- Large diameter cross tubes and extended life rivet joints
- KD brackets allow easy back removal for handling
- Fits same frame as Rocker/Glider
- Available in different sizes
- Power with Zero Gravity effect

Application

Single



Loveseat



9001D True Zero Wall

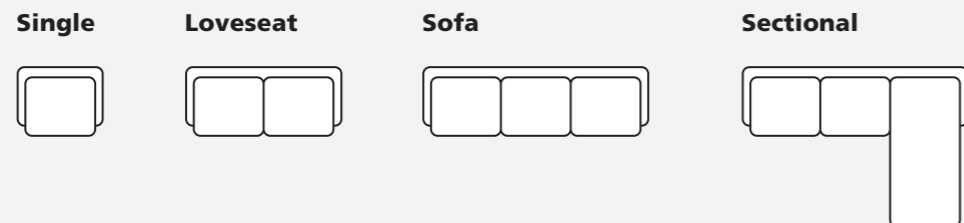


Metal to Floor	Wall away	159 kg Maximum Load	Circles 25000	Headrest and Lumbar Option Available
----------------	-----------	---------------------	---------------	--------------------------------------

Features and Benefits

- Ingenious design to prevent the deformation
- Large diameter cross tubes and extended life rivet joints
- KD back brackets allow easy back removal for handling
- Available in different sizes

Application



906 Rocker (manual)

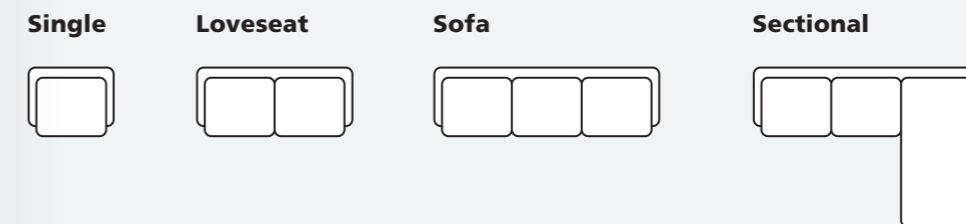


Metal to Floor	Rocker	159 kg Maximum Load	Circles 25000	Headrest Option Available
Metal to Floor	159 kg Maximum Load	Circles 25000	Headrest and Lumbar Option Available	

Features and Benefits

- Large diameter cross tube and extended life rivet joints
- KD back brackets allows easy back removal for handling.
- Activating options: Cable release/outside handle/inside handle
- Available in different sizes

Application





Lifter

The functional solution for relaxed sitting: OKIN's high-quality Lifter mechanism is ideal for electrically adjusting the back and foot sections of seating furniture with stand-up assist functionality. It ensures optimal relaxation. The metal-to-floor mechanism also features outstanding stability and functionality.

6311D Lifter



Metal to Floor	Lifter	159 kg Maximum Load	Circles 10000	Headrest and Lumbar Option Available
----------------	--------	------------------------	---------------	--------------------------------------

Features and Benefits

- 2 motors drive
- Ingenious design to prevent the deformation
- Large diameter cross tubes and extended life rivet joints
- KD back brackets allow easy back removal for handling
- Available in different sizes

Application

Single





Wood to Floor

Modern high-quality seating furniture requires equally high-performance mechanisms: OKIN offers a diverse range of mechanisms that cover a wide variety of recliner and cinema requirements. Our wood-to-floor mechanisms can be integrated almost invisibly into upholstered furniture, allowing an exceptional freedom of design. The mechanisms for adjustable armchairs and sofas with motorized back and foot sections are not only very robust, but also versatile.

516D

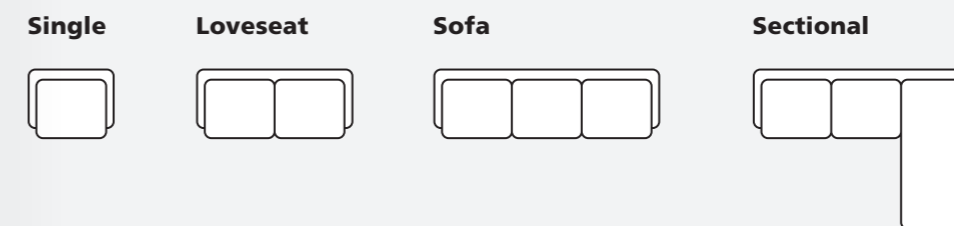


Wood to Floor	Zero Wall	159 kg Maximum Load	Circles 25000	Headrest and Lumbar Option Available
---------------	-----------	---------------------	---------------	--------------------------------------

Features and Benefits

- Wood to Floor mechanism. Power Only
- Extend footrest with more reclining
- Applicable for High Leg recliners
- Available in different sizes
- Options for matching power headrest
- Safe footrest with no pinchpoints

Application



5216D Zero Gravity

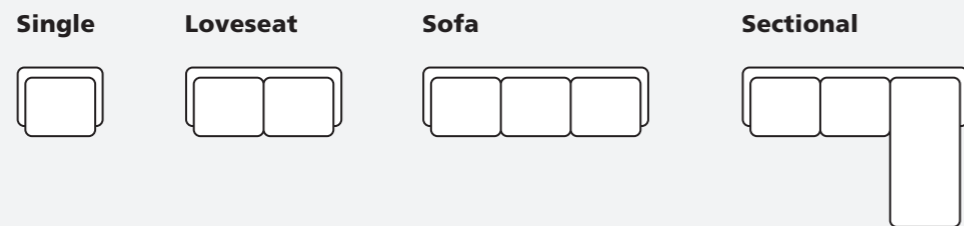


Wood to Floor
Zero Wall
159 kg Maximum Load
Circles 25000
Headrest and Lumbar Option Available

Features and Benefits

- Power with zero-gravity effect
- Added zero-gravity function to the basis of wood to floor mechanism
- Ingenious design to prevent the deformation
- Large diameter cross tubes and extended life rivet joints
- KD back brackets allow easy back removal for handling
- Available in different sizes

Application



5810 Compact



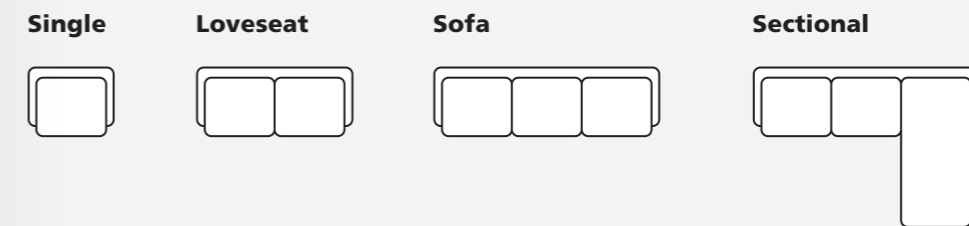
Scan and view in Augmented Reality

Wood to Floor
Zero Wall
159 kg Maximum Load
Circles 25000
Headrest and Lumbar Option Available

Features and Benefits

- Wood to Floor mechanism. Power Only
- Extend footrest with more reclining
- Applicable for High Leg recliners
- Available in different sizes
- Options for matching power headrest
- Safe footrest with no pinchpoints

Application



Headrests

The ideal relief for the upper back and head area: with the OKIN headrest mechanism, users get a reliable product that is not only both functional but also stylish. This headrest mechanism is available in various sizes and as a motorized version.



2316A

Features and Benefits

- Fully integrated mechanism. Easy assembly
- Anti-Pinch Function
- Chromed Visible levers
- Fully Opening Height for Headrest: 5"
- Available in different widths
- Suits contemporary designs



2314A

Features and Benefits

- All in one, center drive
- Springs on both sides as safety feature
- U-shape hole that allows wood frame tolerance
- Suitable for backrest
- Opening angle: 5`7"
- Multiple widths available



2523B

Features and Benefits

- Power Headrest & Power Lumbar combination
- More options for your upholstered backs
- Motors are all centered in the backrest
- Available in different sizes



Relax Chair

OKIN's Relax mechanism is ideal for particularly comfortable seating applications using two and three drives. This modern product design is not only robust and durable, but also extremely smooth during operations.

The Relax chair is available in different sizes and can be combined with a headrest. The additional back, arm and footrest functions ensure relaxed sitting.



3021 & 3031 Relax Chair



Scan and view
in Augmented
Reality



Wood
to
Floor

Wall
away

136 kg
Maximum
Load

Circles
25000

Features and Benefits

- Relax Chair 2 and 3 motors
- Footrest and backrest with 2 motors drive
- Higher and longer leg support
- Support back, arm and base options
- Modern design
- Optional with motorized neckrest (3031)

DewertOkin Technology Group Co., Ltd.



A DewertOkin Technology Brand

DewertOkin GmbH is an internationally recognized manufacturer of drive, system and mechanism technology.

Our company is part of the DewertOkin Technology Group headquartered in JiaXing Zhejiang, China. We maintain the brands OKIN and Dewert for the linear drives. They are widely used in smart furniture (such as motion upholstery, massage chairs, theatre seating, recliners and adjustable beds), medical applications (such as medical and nursing beds) and adjustable office desk control systems. We are a main partner for several major furniture factories. Our goal is to provide complete smart furniture solutions worldwide.



A DewertOkin Technology Brand

DewertOkin GmbH

Weststraße 1
32278 Kirchlengern
Germany

Phone: +49 52 23/9 79-0

Fax: +49 52 23/75-140

info@dewertokin.de

www.dewertokin.com

