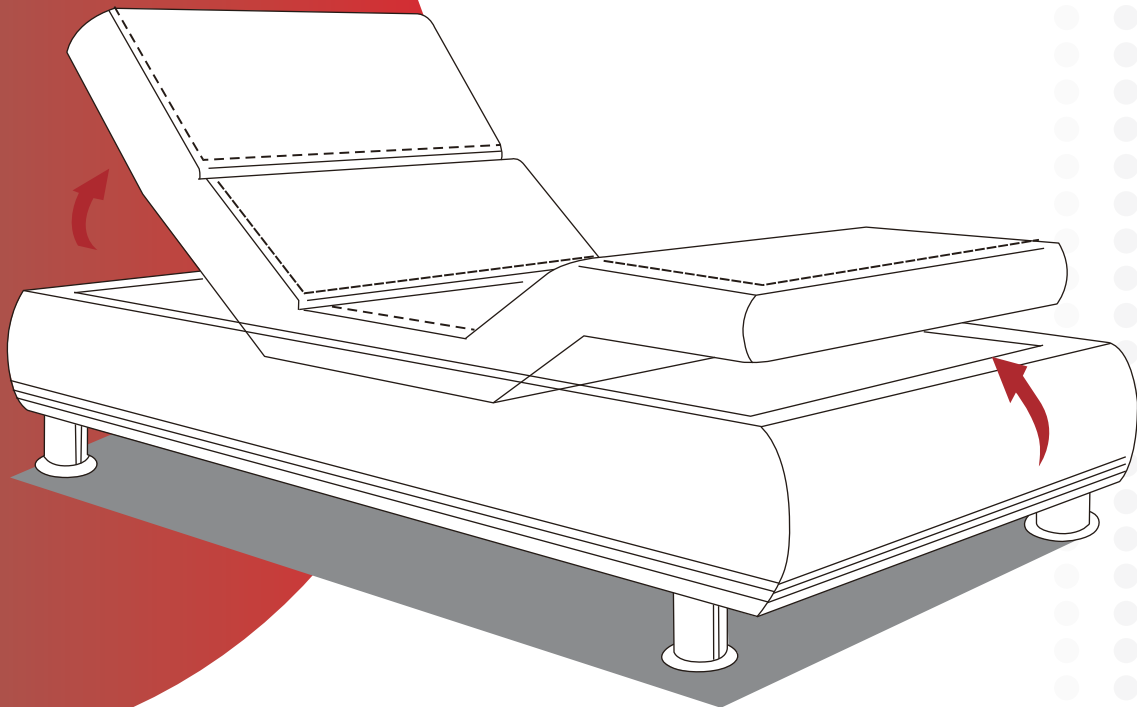


# BEDDING SYSTEMS

Better Components, Better Furniture

NEW



One-Stop Solution for Motion Furniture

## Our success hangs on that of our customers.

Close cooperation, constant communication and intensive exchanges of well targeted ideas are our main precepts. Focusing on customer needs, we provide professional product services and one-stop solutions for smart furniture.



# SERVICE AROUND THE WORLD

Our professional international service team provides support to all our customers worldwide.

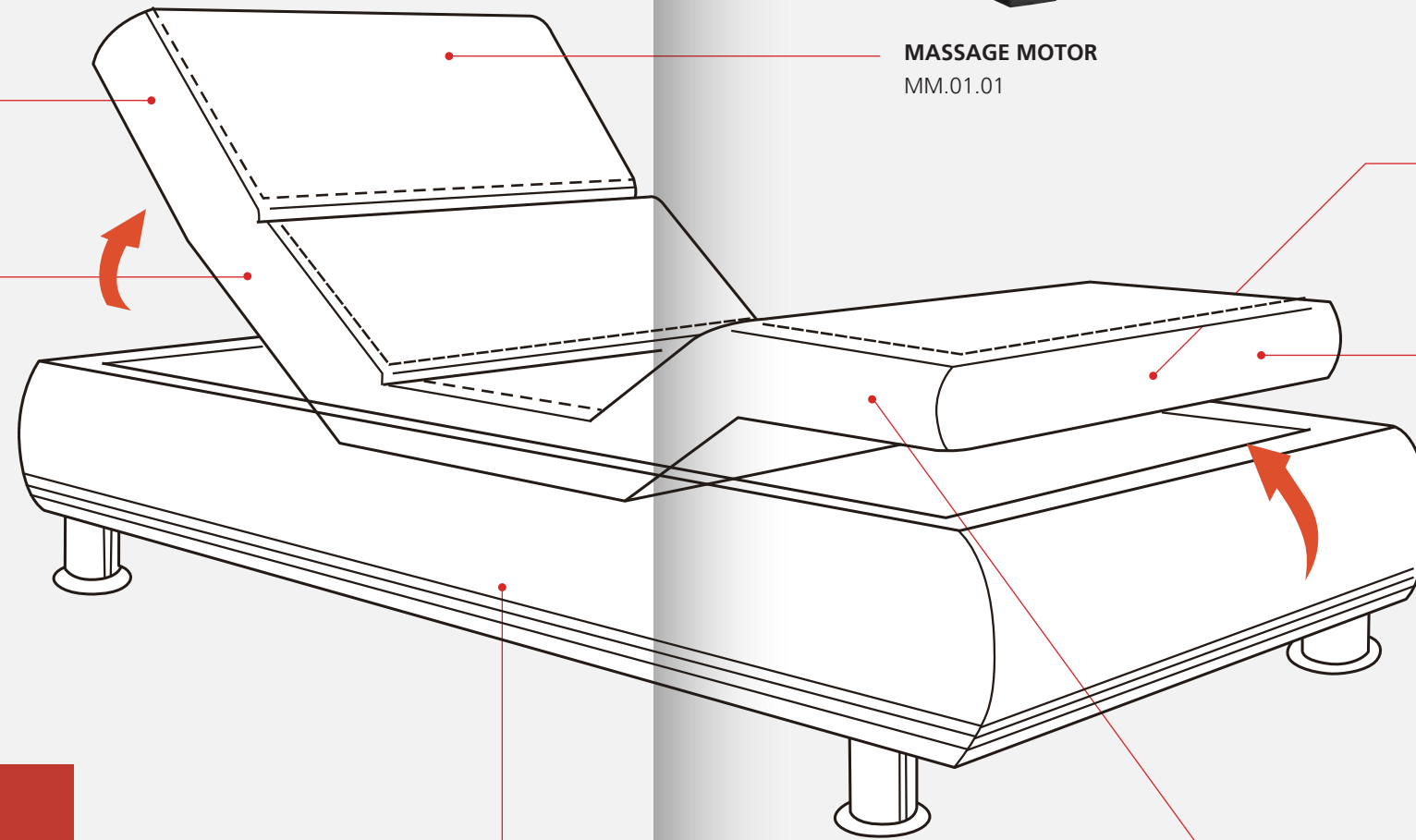
Approved by authoritative certification institutions





**ACTUATOR**  
JLDQ.19

**USB CHARGER SOCKET**  
PO.02



**MASSAGE MOTOR**  
MM.01.01



**CONTROL BOX**  
CB.15.22

**ACTUATOR**  
Deltadrive



**POWER SUPPLY**  
SMPS PW.10



**UNDERBED LED STRIP LIGHT**  
R5.113



**REMOTE CONTROL**  
RF.56



**BLUETOOTH 5.0 CONTROL SYSTEM**

# One-Stop Solution for Motion Furniture

# Actuators

The actuators are powerful, space-saving, quiet in operation and small in installation size. It has a wide range of applications and strong versatility, making it a reliable option for a wide range of Bedding applications.



## JLDQ.19



Minimum installation size	Stroke + 150mm
Load capacity	6000N max
Noise	≤50dB

## Alphadrive 5



Minimum installation size	Stroke + 130mm
Load capacity	6000N max
Noise	≤50dB

### JLDQ.14B



<b>Minimum installation size</b>	Stroke + 130mm
<b>Load capacity</b>	3000N max
<b>Noise</b>	≤65dB

### JLDQ.19B



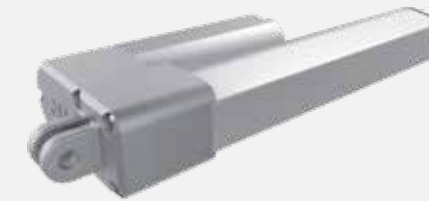
<b>Minimum installation size</b>	Stroke + 150mm
<b>Load capacity</b>	4000N max
<b>Noise</b>	≤50dB

### JLDQ.20



<b>Minimum installation size</b>	Stroke + 130mm
<b>Load capacity</b>	4000N max
<b>Noise</b>	≤50dB

### JLDQ.21



<b>Minimum installation size</b>	Stroke + 130mm
<b>Load capacity</b>	2500N max
<b>Noise</b>	≤50dB

### JLDQ.22

Clevis available in different rotations (0°/45°/90°/135°) and materials (plastic / zinc alloy)



Minimum installation size	Stroke + 150mm
Load capacity	6000N max
Noise	≤50dB

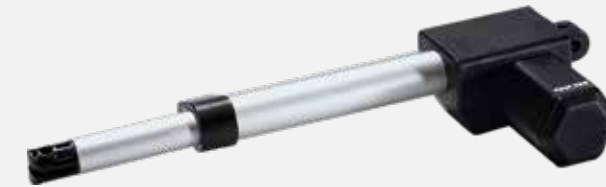
### JLDQ.23

Clevis available in 0° and 90° positions



Minimum installation size	Stroke + 100mm
Load capacity	2500N max
Noise	≤50dB

### Deltadrive



Minimum installation size	Stroke + 180mm
Load capacity	6000N max
Noise	≤65dB

### Betadrive



Minimum installation size	Stroke + 157mm
Load capacity	6000N max
Noise	≤65dB



# Double Drives

OKIMAT 6 offers the perfect combination of comfort and flexibility for electrically adjustable bed systems. Its built-in electronic overload protection provides safety at all times. In case of power failure, the integrated 9V battery ensures the bed to be set back to sleep position. Dual drive designed for demanding applications with a low power consumption (<0,5W) when in standby mode. Thanks to a built-in switch-mode power supply and a wide range of voltage input (100-240V AC), OKIMAT 6 can be safely used worldwide.

## Okimat 6



### Plug types

CHN, US, JP, EU, UK, AUS plugs available on customer request



<b>Input</b>	100-240V
<b>Stroke range</b>	48mm,53mm,69mm,87mm
<b>Minimum installation size</b>	581mm
<b>Load capacity</b>	4500N max
<b>Speed</b>	3.9mm/sec max
<b>Backup battery</b>	9V
<b>Noise</b>	≤65dB



# Handsets

The appearance of the product is novel and the operation is simple. The buttons are responsive and comfortable to the touch. The handset has various functions and can be applied to various control scenarios.



## Wireless Handsets

### RF.27



---

11/19 buttons, controls 2-5 actuators

---

Blue backlight

---

One-touch Flat and Zero-G position buttons

---

Preset memory positions: 1-6

---

Optionals: Flashlight, UBL, Child safety lock, Pair button, Massage

---

### RF.28



---

7/9 buttons, controls 2 actuators

---

Blue backlight

---

One-touch Flat and Zero-G position buttons

---

Preset memory positions: 1-6

---

Optionals: Flashlight, UBL, Child safety lock

---



### RF.29



11 buttons, controls 2-5 actuators

No backlight

One-touch Flat and Zero-G position buttons

Preset memory positions: 1-6

Optionals: Flashlight, UBL, Child safety lock, Pair button, Massage

### RF.34



3/5/7/9 buttons, controls 1-4 actuators

Blue / White Backlight

One-touch Flat and Zero-G position buttons

Preset memory positions: 1-6

Optionals: Flashlight, UBL, Child safety lock, Pair button, Massage

### RF.58



Color display + 12 buttons, controls 2-5 actuators

White backlight

One-touch Flat position button

Preset memory positions: 1-6

Underbed light, Child safety lock, Massage functions available



## RF.50



11/17/19/22 buttons, controls 2-5 actuators

White backlight

One-touch Flat and Zero-G position buttons

Preset memory positions: 1-6

Optionals: UBL, Child safety lock, Pair button, Massage

## RF.64



11/20/22 buttons, controls 2-5 actuators

White / Blue backlight

One-touch Flat and Zero-G position buttons

Preset memory positions: 1-6

Side switch to control bed A or bed B or bed A+B

Optionals: UBL, Child safety lock, Flashlight, Massage

## RF.56



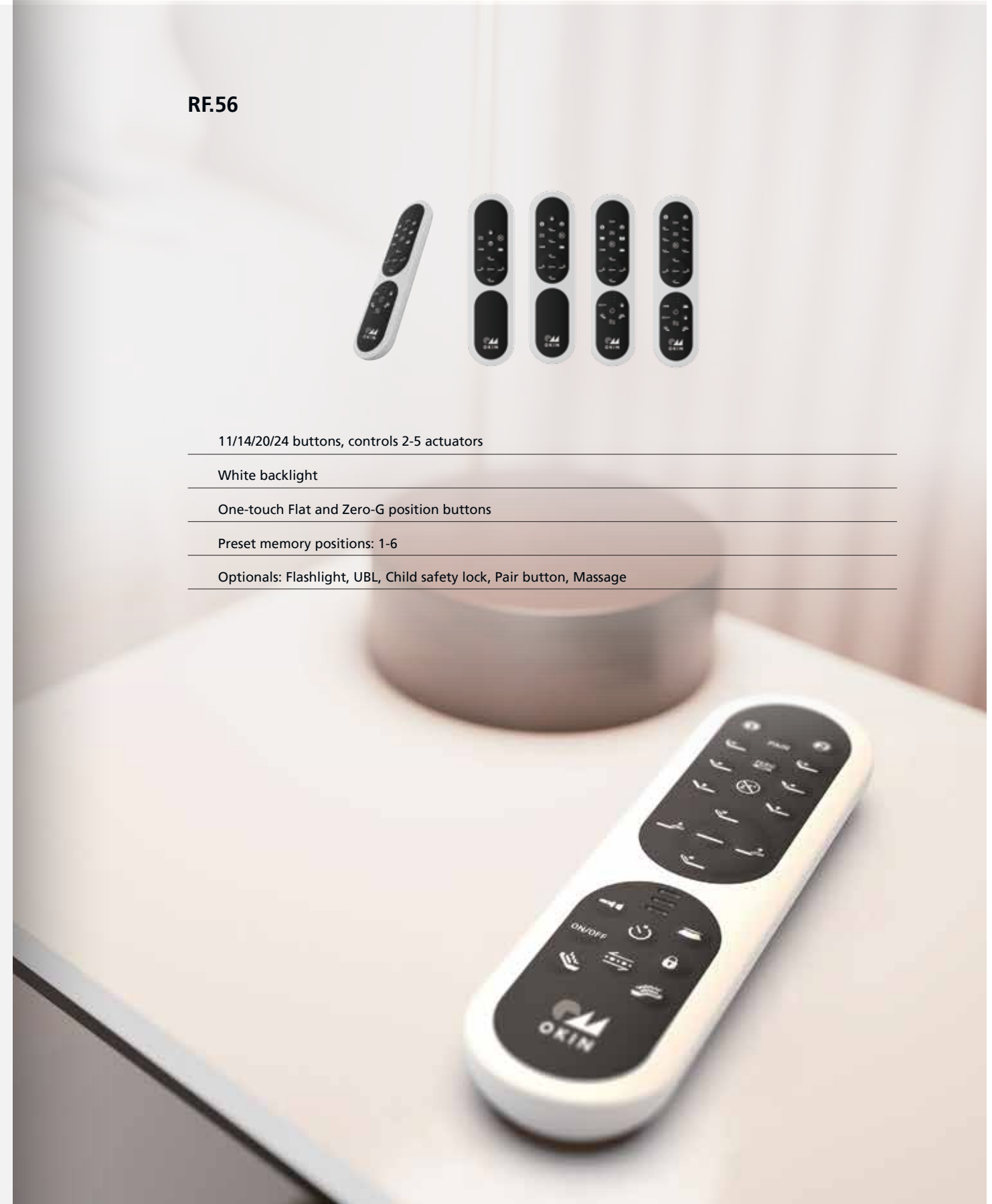
11/14/20/24 buttons, controls 2-5 actuators

White backlight

One-touch Flat and Zero-G position buttons

Preset memory positions: 1-6

Optionals: Flashlight, UBL, Child safety lock, Pair button, Massage



## Wired Handsets

### Proline

- 2/4/6/8 buttons, controls 1-3 actuators



### Baseline

- 2/4/6 buttons, controls 1-2 actuators



### HS.12

- 2/4 buttons, controls 1-2 actuators



### HS.13

- 2/3/4/5/6/7 buttons, controls 1-3 actuators



## Prime Series

### RF ECO SET

- 2/6 buttons, controls 1-2 actuators  
- Two single beds synchronization with wireless sync



### RF LITE SET

- 2/6 buttons, controls 1-2 actuators  
- Two single beds synchronization with wireless sync  
- One-touch Flat position button



# Customization



## OKIN provides you with your own handset

Our team can help you  
make your vision become reality -  
from design to production,  
we have everything you need  
to create your own personalized handset.

# Control Boxes

## CB.24.22

- 2 actuators, 6 preset memory positions
- 2 ports for massage motor (2-pin port direct connection)
- Wired synchronization
- RF&BT dual-mode communication, Built-in bluetooth
- Reserved MFP port
- Single hall sensor actuators available
- Optionals: UBL, Underbed light sensor, USB charger, Voice Control



## CB.24.42

- 3-4 actuators, 6 preset memory positions
- 2 ports for massage motor (2-pin port direct connection)
- Wired synchronization
- RF&BT dual-mode communication, Built-in bluetooth
- Reserved MFP port
- Optionals: UBL, Underbed light sensor, USB charger, Voice Control



## CB.24.54

- 4-5 actuators, 6 preset memory positions
- 4 ports for massage motor (2-pin port direct connection)
- Wired synchronization
- RF&BT dual-mode communication, Built-in bluetooth
- Reserved MFP port
- Single hall sensor actuators available
- Optionals: UBL, Underbed light sensor, USB charger, Voice Control



## CB.12.20

- 2 actuators, 6 preset memory positions
- Wired and wireless synchronization
- 2.4GHz ISM, RF communication
- Optionals: Bluetooth, UBL



## CB.12.21

- 2 actuators, 6 preset memory positions
- 1 port for massage motor (2-pin port direct connection)
- Wired synchronization
- RF&BT dual-mode communication, Built-in bluetooth
- Optionals: USB charger, Voice Control



## CB.15.22

- 2 actuators, 6 preset memory positions
- Two single beds synchronization with sync cable
- 2.4GHz ISM, RF communication
- Optionals: Bluetooth, UBL, Underbed light sensor



2 massage motors

## CB.15.42

- 3-4 actuators, 6 preset memory positions
- Two single beds synchronization with sync cable
- 2.4GHz ISM, RF communication
- Optionals: Bluetooth, UBL, Underbed light sensor



2 massage motors

# Accessories

## Power Supplies

### Lithium battery

#### JLDP.11



---

Normal capacity: 1800mAh

---

Running times: approximately 220 times with a 300 pounds load

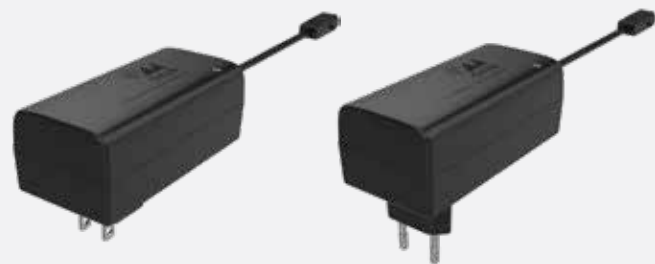
---

Overcharge, discharge current and short circuit protection

---

### Wall plug SMPS

#### PW.10



---

Input: 100-240V AC 50Hz~60Hz 2.5A

---

Output: 29V DC 1.5A / 1.8A / 2.0A

---

Overvoltage, overcurrent, overheating and short circuit protection

---

### Desktop SMPS

#### PW.20



---

Input: 100-240V AC 50Hz~60Hz 2.5A

---

Output: 29V DC 1.8A / 2.0A / 3.0A

---

Overvoltage, overcurrent, overheating and short circuit protection

---

### Desktop SMPS

#### PW.30



---

Input: 100-240V AC 50Hz~60Hz 2.5A

---

Output: 29V DC 1.8A / 2.0A

---

Overvoltage, overcurrent, overheating and short circuit protection

---

Back up battery compartment (2\*9V batteries)

---

## USB Charger Sockets

### PO.02.01

- USB charging ports: 2
- USB output: 1\*5V/1.0A, 1\*5V/2.1A



### PO.02.02

- USB charging ports: 2
- USB output: 2\*5V/1.0A



### PO.04 / PO.06

- Thin type
- USB charging ports: 2
- USB output: 1\*5V/1.0A, 1\*5V/2.1A



### PO.08.01

- Small size: 65,42x25,42mm
- USB charging ports: 2
- USB output: 2\*5V/1.0A



### PO.11.01

- USB-A + USB-C fast charge
- Input: 29V
- Output: 5V/2.5A, 9V/2A, 12V/1.5A



### PO.11.02

- USB-A + USB-C No fast charging
- Input: 29V
- Output: 5V/2A



### PO.13.01

- USB-A + USB-C fast charge
- USB Output: 5V/3A, 9V/2A, 12V/1.5A



### JLDP.14.027

- USB charging ports: 2
- USB output: 2\*5V/1.0A





## Massage Motor Kit

### MM.01.01

- Input: 24-29V DC
- Speed: 2200RPM
- Control box operated



### JLDQ.9.001

- Input: 24-29V DC
- Speed: 2800RPM
- Control box operated



### MK.01

- Rubber mat and ABS support bars
- Used to install the massage motor



## Underbed LED Strip Light

### R5.113

- Input: 24-29V DC
- 2.1DC plug / 2\*24AWG or 4-pin plug
- Light color: warm white (2800-3200k color temperature)



## Automatic Underbed Light Motion Sensor

### FP.07.03

- Easy to install, can be placed on the bed side or the bed leg
- Activated by human movement in a dark environment automatically turns the underbed light on/off
- Infrared detection sensor



## Bluetooth Speaker

### BT.SP.K.01

- 2x6W + 12W Output power
- $\geq$ 45Hz-20KHz Frequency response



# Voice Control System



## Wired Offline Voice Control

FP.08.07



Plug & play offline voice control, simple to use

USB-A + USB-C 18W fast charge + wireless charger

USB output: 5V 3A / 9V 2A / 12V 1.5A

Wireless charger: 5W

Emergency stop and flat function

## Wireless Offline Voice Control

FP.08.08



Wireless offline voice control, can be placed anywhere in the room

2.4 GHz RF

Pairing and emergency stop buttons

## Online Voice Control

## Wi-Fi Control Box



Online control

Connection with "Amazon Alexa" devices

Wi-fi control box needed



# APP Customization

Bluetooth 5.0

- Adopt bluetooth 5.0 technology with lower power consumption, less radiation and faster connection
- Support smart phone control with stylish interface design
- Support actuator control, lighting control, massage control and alarm setup functions
- Customized interface design available
- Support Siri voice control

App Store



Google Play



Huawei App Store





 **VITAL SIGNS**  
Real-time data

Real-time monitoring of vital signs to monitor respiratory rate, heart rate, body movement, on/off bed in real time.

 **ANTI-SNORE**  
Smart anti-snore function

After detecting continuous snoring, the backrest of the bed will be raised to stop the snoring (3 angles available) and go flat automatically 10 min after finishing the anti-snore action.

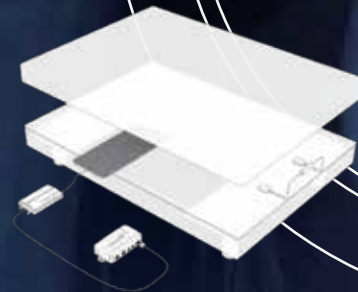
 **SLEEP REPORT**  
Control and prevention

Daily, weekly and monthly sleep reports to understand sleep quality, health status and trends to detect and avoid possible health problems in advance.

 **FEATURES**  
Many functions

Bluetooth / Wi-Fi,  
Chinese / English / etc,  
Online 24/7,  
Real-time monitoring,  
Abnormal vital signs warning,  
Off-bed warning.

**SLEEP  
MONITOR**  
Better Sleep



 **SLEEP AID**  
Help falling asleep

Light / meditation / brainwave music and white noise to help users relax, relieve fatigue, release stress, and improve leisure and sleep quality.

 **CONTROL**  
All on your phone

Fully functional bed control interface to control the smart bed directly from mobile phone or tablet: easy to use, no more worries about losing the remote again.

When the alarm clock goes off, the bed will run to the preset memory position or start the vibration massage to wake up the user, as previously set up by the user.

**ALARM CLOCK**   
Smooth wake up



Available for  
Android devices



Available for  
iOS devices

# OKIN Global Service

## China / Jiaxing

Add: No. 1507, Taoyuan Road, Gaozhao Street, Xiuzhou District,  
Jiaxing City, Zhejiang Province, China  
Service Hotline: +86-400-887-8573  
Tel: +86-(0)573-8228-1028  
E-mail: sales@dewertokin-technology.com  
Web: www.dewertokintechnology.com

## China / Huizhou

Add: Dongfeng Car City Storage & Logistics Distribution Center,  
5#, Longsheng Road No.2, Xinliao, Daya Bay District,  
Huizhou, Guangdong  
Tel: +86-(0)755-8921-7192  
E-mail: sam.shen@refinedchina.com

## China / Taiwan

Phoenix Mecano Hong Kong Limited Taiwan Branch  
Add: Room 4E-12, No.5, Hsin-Yi Road, Sec. 5, 11011  
Taipei, Taiwan  
Contact: Allen Wang - Sales Manager  
Phone: +886 2 27252582  
E-mail: allen@pmtwn.com.tw

## Vietnam

Add: Lo H5-2(khu B1), duong D9, khu cong nghiep rach bap, xa an dien,  
thi xa ben cat, tinh binh duong, Vietnam  
Contact: Peter Ruan  
Mobile: +84 0919040713  
Email: Peter.Ruan@dewertokin-technology.com

## Germany

DewertOkin GmbH  
Add: Weststrasse 1, 32278 Kirchlengern  
Deutschland / Germany  
Tel: +49 5223 979 0  
Fax: +49 5223 751 82  
E-mail: info@dewertokin.de  
Web: http://www.dewertokin.com

## Australia

Add: 64 Butler way, Tullamarine, Victoria, Australia, 3043  
Tel: +61 (3) 9338 56 99  
Fax: +61 (3) 9338 53 99  
E-mail: info@phoenix-mecano.com.au  
Web: www.phoenix-mecano.com.au

## Korea

Add: No. 506, Bomb Building, 617-3, Gajeong-dong, Seo-gu,  
Incheon, Korea  
Zip Code: 22731  
Contact: Amos An  
Mobile: +82-10-6865-0599  
E-mail: amos.an@dewertokin-technology.com

## Japan

Shizuoka Kinzoku Co., Ltd  
Add: 52 Saiwai-Cho 420-0067 Shizuoka-City  
Contact: JR Piao - Sales Manager  
Mobile: +81-90-6507-0205  
E-mail: jr.piao@dewertokin-technology.com  
Web: https://www.dewertokin.com/ja/

## Malaysia / India

### Singapore / Thailand Indonesia

Add: No. 22A-1, Blok 22A, Level1, Empire Galleri,  
Jalan Empayar/KU1 off Persiaran Sultan Ibrahim,  
41150 Klang, Selangor, Malaysia  
Contact: Ngkian Seng  
Mobile: +60 193150628  
E-mail: ngks@dewertokin-technology.com

## United States

Okin America INC.  
Add: 291 CDF Blvd Shannon, MS 38868  
Contacts: Mike Pequignot  
Tel: +1 662-200-7027  
E-mail: mike.pequignot@okinamerica.com  
Web: www.okinamerica.com

## Brazil

DewertOkin Latin America  
Add: Av. Prof. Alceu Maynard de Araujo, 185, São Paulo, SP  
Zip Code: 04626-160  
Contact: Mrs. Adriana Shinzato - Sales coordinator  
Tel: +55.11.56434190  
E-mail: vendas@dewertokin.com.br  
Web: www.dewertokin.com.br

