



DEWERT

A DewertOkin Technology Brand

Powered by **DEWERT**



DRIVE & SYSTEM

Technology for Medical Applications

CARE | HOSPITAL

DEWERTOKIN TECHNOLOGY GROUP

DewertOkin Technology Group Ltd. is a subsidiary of Phoenix Meccano Group in Switzerland. Its two brands, Dewert and OKIN, are originated in North Rhine-Westphalia, Germany, counting over 40 years of history. With 5 production bases in Asia-Pacific and Europe, and a total of nearly 3,000 employees, DewertOkin provides integrated hardware and software solutions for Smart Home, Smart Healthcare, Smart Office and other scenarios.

- Smart Manufacturing
- Production Real-time Traceability
- Global Supply Chain
- Fast Delivery Guarantee



ONE-STOP SOLUTION FOR SMART FURNITURE & HOSPITAL BEDS

Under the brand OKIN you can find a wide range of products for smart furniture (such as motion upholstery, massage chairs, theatre seating, recliners and adjustable beds) and adjustable office desk and chair systems. Whereas the brand DEWERT offers high performance products for medical applications (such as medical and nursing beds).

The first in the industry to propose a One-stop Smart Solution concept, our company serves over 1/5 of the world's smart furniture manufacturers and is the preferred supplier of many world-class brands. With a presence in over 28 countries and regions around the world, DewertOkin is a true industry leader.



Over 40 years of experience

Over 40 years focusing on the development and innovation of One-stop Smart Solutions. 5 innovative R&D centers around the world with post-doctoral workstations as the core. Over 1,500 patents, including more than 900 patents for inventions.



- In May 2021, we set up the first high-level national laboratory in the industry accredited by China National Accreditation Service for Conformity Assessment (CNAS).
- Awarded the National High-tech Enterprise Certificate & National IP Advantage Enterprise, and is the main drafting unit of the national light industry and Zhejiang manufacturing group standards.
- Approved by authoritative certification institutions.



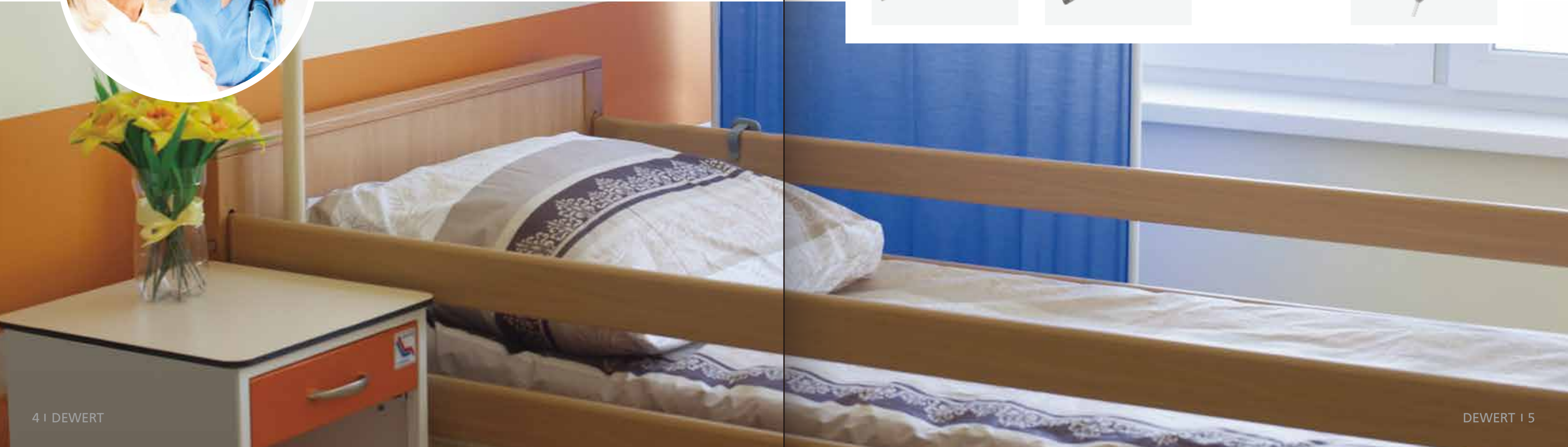
Reliable and user-friendly

The demands on modern beds are high: facilities expect long-lasting products, caregivers need reliable technology with a high level of functionality, and patients place great importance on comfort.

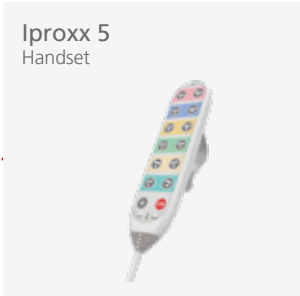
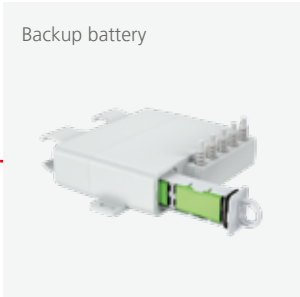
Dewert products are single-fault protected and meet all of the required standards. Their robust and compact design, combined with their high push and pull forces, enable them to be used in applications such as in low nursing beds and bariatric beds.



NURSING BEDS



MC MINI
Control unit



Safety for challenging tasks

ICU beds (Intensive Care Unit) must be easy to use, as well as ensure quick adjustments at any time. It must be possible to move patients into a shock position or CPR position within seconds.

As a system provider, Dewert ICU beds come fully equipped with customised drive technology, operating elements and a wide range of accessories.

Dewert's drive technology also features high safety reserves that remain fully functional even during exceptional situations, such as short-term overloads.



ICU BEDS

MC 16 Control unit



DA28
Single drive



JLDQ.20M
Single drive



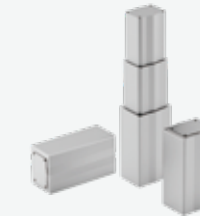
Iproxx AC Touch
Nurse panel



Weighing panel



DC 20
Lifting column



Iproxx 3 Display
Handset



BP1
Battery



DC 20
Lifting column



Stop Switch
Switch



Mobility for improved quality of life

Moving from the bed to a chair or a bathtub is an essential part of the daily life of people with mobility impairments. Moreover, safe access to therapy pools during water therapy helps to facilitate these applications.

Patient lifters ensure a reliable and safe lifting and lowering that significantly improves the quality of life for these people. The PLC 20 system from Dewert with its lifting, pivoting and lowering functions is customised for exactly these requirements. In addition to safe and durable operation, Dewert's PLC 20 system is also designed for easy integration into a patient lifter.



PATIENT LIFTERS



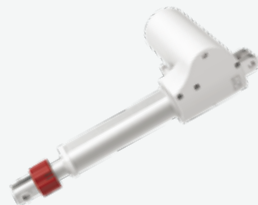
PLC 20
Control unit



DA31
Single drive



DA29-LR
Single drive



Iproxx 4 Lifter
Handset



Battery charger



Stability and precision

Safety, comfort and a compact design play an important role in patient chairs. Given the fact that patients sometimes remain sitting for long periods, the chairs must also be capable of gentle and precise adjustments. In addition, the slim design enables doctors to work very close to patients.

Dewert lifting columns for patient chairs deliver outstanding stability and reliable adjustments. Their whisper-quiet operations as well as the gentle, quick adjustments provide even more comfort during treatment.



PATIENT CHAIRS

MC 12 Control unit



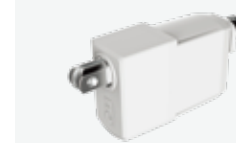
JLDQ.19M
Single drive



DA29
Single drive



DA31
Single drive



Iproxx 2
Handset






NOISELESS


POWERFUL


STABLE

DA28



Description:
Safe, fast and smooth release thanks to a mechanical quick release, this drive makes easier and safer to lower the bed in case of emergency.

Max load: 4000N
Installation size: 185+stroke (25-50mm)
Noise without load: ≤50dB(A)@500mm
Installation mode: 0° or 90°
Feedback: Potentiometer / Hall sensor

DA29



Description:
Designed for extreme loads: this silent and powerful yet fast single drive with multiple feedback modes is the ideal choice for patient lifters and chairs.

Max load: 8000N
Installation size: 165+stroke (20-300mm)
Noise without load: ≤50dB(A)@500mm
Installation mode: 0° or 90°
Feedback: Hall sensor and reed switch
Optional: Manual mechanical release function

DA31



Description:
Thanks to its low noise and compact size, the DA31 can be installed in narrow spaces, making it an optimal choice to patient lifter applications.

Max load: 4000N
Installation size: 185mm+stroke (25-50mm) or 135mm+stroke(50-300mm)
Noise without load: ≤50dB(A)@500mm
Installation mode: 0° or 90°
Feedback: Hall sensor

JLDQ.19M



Description:
Affordable yet powerful single drive for a variety of applications: the JLDQ.19M has high adjustment forces and is very compact.

Max load: 6000N
Installation size: 160+stroke (20-400mm)
Noise without load: ≤50dB(A)@500mm
Installation mode: 0°
Feedback: Hall sensor

JLDQ.20M



Description:
Its small size but long stroke combined to affordability makes this single drive an ideal choice for nursing lift beds.

Max load: 4000N
Installation size: 150+stroke (20-400mm)
Noise without load: ≤50dB(A)@500mm
Installation mode: 0°
Feedback: Hall sensor

JLDQ.22M



Description:
Directly assembled with the control box, this single drive with a metal tail and long life is widely used in hospital beds.

Max load: 6000N
Installation size: 165+stroke (20-400mm)
Noise without load: ≤50dB(A)@500mm
Installation mode: 0° or 90°
Feedback: Hall sensor

JLDQ.30Y



Description:
Strong, compact and affordable: the JLDQ.30Y can also be operated manually without power, making it a versatile option for nursing beds and more.

Max load: 3000N
Installation size: 160+stroke (20-300mm)
Noise without load: ≤50dB(A)@500mm
Installation mode: 0° or 90°
Feedback: Hall sensor

JLDQ.30M



Description:
Compact size and strong power combined with the affordability of the JLDQ.30M allows its wide use in hospital beds.

Max load: 6000N
Installation size: 160+stroke (20-300mm)
Noise without load: ≤50dB(A)@500mm
Installation mode: 0° or 90°
Feedback: Hall sensor

Actuators

DUOMAT 10/11



Description:
Its fixed mounting size and stroke and built-in control system make it easy to install and operate. A modern housing design, increased mechanical stability and the many configuration details and options make our double drive even more attractive to use.

Max load: 4500N
Installation size: 581+stroke (51+n*9 (n≤4))
Noise without load: ≤60dB(A)@500mm
Installation mode: Fixed length 581mm
Extension interface: Max 2 actuators and 1 handset

Double Drives

MEGAMAT 10



Description:
Reliable and stable, this single drive simplifies installation, offering mounting angle versatility and being assembled directly with the control box.

Max load: 6000N
Installation size: 165+stroke (20-300mm)
Noise without load: ≤60dB(A)@500mm
Installation mode: 0° or 90°
Feedback: Hall sensor
Special configuration: Versions ER/GQR

MEGAMAT XS



Description:
The small powerhouse. Thanks to its angle versatility and the particularly small motor housing, it is ideal for use in home care beds with front motors and as a slave drive.

Max load: 3000N
Installation size: 150+stroke (20-400mm)
Noise without load: ≤60dB(A)@500mm
Installation mode: 0°, 45° or 90°
Feedback: Hall sensor

DC 20



Description:
Versatile heavy-duty column with a particularly low noise level during operation. Its small size and long stroke make it ideal for ICU beds and high off-center loads applications.

Max load: 2000N
Installation size: 350+400mm or 320+380mm
Noise without load: ≤50dB(A)@500mm
Installation mode: Upright mounting
Feedback: Hall sensor
Anti-twist device: 1000N*m

DL 01



Description:
Sturdy two-stage lifting column with ergonomic height. Its flexible installation size applies to a wide use range, i.e. beauty chairs, consoles, and more.

Max load: 4000N
Installation size: 200+stroke (20-300mm)
Noise without load: ≤50dB(A)@500mm
Installation mode: Upright mounting
Feedback: Hall sensor
Anti-twist device: 250N*m

Lifting Columns

INTELLIGENT SYSTEMS

Intelligent systems from Dewert ease the work load in nursing facilities and can be individually adapted to the requirements of the situation.

MC 16

Control Units



Description

MC 16 is a single-fault protected control unit with integrated SMPS that can control multiple drives and support program definition.

Connection options: Drives: 1 - 5

Operating elements: 1 - 2

MC 12



Description

Compact and affordable single-fault protected control unit with integrated SMPS, designed for directly mounting on the drive.

Connection options: Drives: 1 - 4

Operating elements: 1

MC 15 / 17



Description

Single-fault protected control unit with integrated SMPS, designed for directly mounting on the drive. MC17 also has supportable program definition.

Connection options: Drives: 1 - 4

Operating elements: 1 - 2

PLC 20

Control Units



Description
PLC 20 is a control unit specially engineered for patient lifters. Its slim and vertical design adapts perfectly to lifter structures.

- Connection options: -
- Drives: 1 - 2
- Operating elements: 1

MC Mini



Description
A small and compact control box that only requires minimal space for installation. It has extremely low energy consumption in standby mode. It can be applied to ultra-low home care beds. Designed to be directly mounted on the drive.

- Connection options: -
- Drives: 4
- Operating elements: 1

Nocturne

Handsets



Description
Versatile and durable handset with smooth, easy-to-clean surface. The fluorescence aspect ensures optimum visibility of the keys in low-light conditions.

- Indicators: 3
- Keys: 11
- Customizable parts: Key functions and foil pattern

Iproxx 2

Handsets



Description
The affordable IPROXX 2 combines robustness and versatility with a slim and elegant design. Its silent keys ensure discretion while operating.

- Indicators: 3
- Keys: 11
- Customizable parts: Foil pattern / Integrated mechanical or programmable, multi-stage lock function

Iproxx 3



Description
Versatility in a slim design: the IPROXX 3 can be used for any number of drives and a wide number of applications.

- Indicators: 3
- Keys: 14
- Customizable parts: Key functions and foil pattern

Iproxx 3 Display



Description
Intuitive and user-friendly handset with fully integrated LCD display. The IPROXX 3 Display is single-fault protected, durable and versatile.

- Indicators: -
- Keys: 8
- Customizable parts: Key functions and foil pattern

Iproxx 4

Handsets



Description
Simple design, small size and easy to clean: IPROXX 4 is the cost-effective solution for care beds.
Indicators: 2
Keys: 11
Customizable parts: Key functions and foil patten

Iproxx 4 Lifter



Description
Handset for patient lifter, designed in a set with the PLC 20 control unit. Its foil design can be customized to meet the customer requests.
Indicators: 3
Keys: 4
Customizable parts: Key functions and foil pattern

Iproxx 5



Description
The advanced version of the handset can be widely used in the field of nursing. It is equipped with 14 buttons, which can be optionally equipped with vocal feedback or voice control functions to improve user accuracy and convenience. Comfortable grip.
Indicators: 3
Keys: Max 14
Optional Functions: Vocal feedback; Voice control

Iproxx AC 2

Handsets



Description
Outstanding durability and safety with a wide range of functions: the IPROXX AC 2 enables multiple drives to be locked and unlocked individually.
Indicators: 13
Keys: 22
Customizable parts: Key functions and foil pattern

Iproxx AC 2 Display



Description
The IPROXX AC 2 Display enables multiple drives to be locked and unlocked individually, while several bed information can be visualized on the built-in LCD display.
Indicators: 7
Keys: 25
Customizable parts: Key functions and foil pattern

Iproxx AC Touch



Description
Modern nurse panel with a full size touch LCD screen display and full functions. Equipped with speakers, it can reproduce uploaded videos.
Indicators: -
Keys: 2
Customizable parts: Key functions

SAFETY


- Dewert products meet all of the relevant primary and product-based standards in their areas of application.
- Dewert products and systems feature outstanding functional safety to minimise dangers and risks to users.
- Many Dewert drives can be equipped with a battery-operated reset function in case of power or handset failure.



STANDARDS



SINGLE-FAULT
PROTECTION



RESET
FUNCTION

Emergency Stop

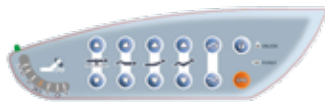


Description:
Discreet and reliable, the Medical Emergency Stop Switch is directly connected to the control box instead of the handset, directly cutting off the power supply when activated.

Input current: 1A
Input voltage: 24V DC

Guardrail Control

Accessories



Description:
Completely customizable on shape and size, the Electric Guardrail Control can also be personalized with lock/unlock and CPR buttons, power supply and charge LED indicators.

Input current: DC 29V
Input voltage: -

UBL



Description:
This UBL can be widely used in hospital beds, nursing beds and other nursing applications. It is equipped with warm white light, which is soft and comfortable on the sight. It improves safety in low-light ambients and nighttime for both patients and staff movements.

Light Color: Warm White Light
Illumination: LEDs

Weighing Panel



Description:
This stand-alone weighing panel can be used in a wide range of medical applications. It features an LCD display and physical buttons, displays real-time weighing data and historical records. With high weighing accuracy, it is easy to install and to use thanks to its bilingual display in English and Chinese.

IP Protection: IPX6
Weighing display accuracy: 100g

PW.11



Description:
This wall plug-in switch power supply can be used worldwide thanks to standardized regional plugs and its IPX4 protection level.

- Input voltage: 100V-240V~
- Input frequency: 50-60Hz
- Input current: 2.5A max
- Input voltage: 29V

PW.21



Description:
Discreet and compact, this desktop switch power supply has an IPX4 protection level.

- Input voltage: 100V-240V~
- Input frequency: 50-60Hz
- Input current: 2.5A max
- Input voltage: 29V

Power Supplies

AG 7



Description:
Compact design, robust housing. The rechargeable battery AG7 with proven lead-gel technology ensures the functionality of drives during a power failure.

- Battery type: Rechargeable lead-acid battery
- Output voltage: 24V DC
- Capacity: 1.2Ah
- Other: Deep discharge protection

BP 1



Description:
The BP 1 battery has ultra-low static power consumption (as low as 0.5uA) and an intelligent battery management to preserve battery life.

- Battery type: Lead-acid battery with built-in charger
- Output voltage: 24V DC rated capacity
- Capacity: 1.2Ah
- Other: Intelligent low voltage alarm

Batteries

JLDK.76



Description:
With a high IPX6 protection, the JLDK.75 foot switches can control up to 4 motors. All the buttons have a LED light display to make operations quicker and easily identifiable.

- Keys: Max. 3 buttons available
- Function: -

JLDK.45



Description:
Easy to operate, this waterproof foot switch can support up to 2 rows of key combinations.

- Keys: Max. 4 buttons available
- Function: -

Foot Switches

China Jiaxing

Add: No. 1507, Taoyuan Road, Gaozhao Street, Xiuzhou District, Jiaxing City, Zhejiang Province, China
Service Hotline: +86-400-887-8573
Tel: +86-(0)573-8228-1028
E-mail: info@dewertokin.com
Web: www.dewertokintechnology.com

China Huizhou

Add: Building C6, Zhantao Industrial Zone, Weibu Village, Qiuchang Town, Huiyang District, Huizhou, Guangdong, China
E-mail: info@dewertokin.com

China Taiwan

Phoenix Mecano Hong Kong Limited Taiwan Branch
Add: Room 4E-12, No.5, Hsin-Yi Road, Sec. 5, 11011 Taipei, Taiwan, China
Contact: Allen Wang
Phone: +886 2 27252582
E-mail: allen@pmtwn.com.tw

Germany

DewertOkin GmbH
Weststrasse 1
32278 Kirchlegern
Deutschland / Germany
Tel: +49 5223 979 0
Fax: +49 5223 751 82
E-mail: info@dewertokin.de
Web: www.dewertokin.com

United States

Okin America INC.
Add: 291 CDF Blvd Shannon, MS 38868
Tel: +1 662-566-1000
E-mail: orders.okin@okinamerica.com
Web: www.okinamerica.com

Australia

Add: 64 Butler way, Tullamarine, Victoria, Australia, 3043
Tel: +61 (3) 9338 56 99
Fax: +61 (3) 9338 53 99
E-mail: info@phoenix-mecano.com.au
Web: www.phoenix-mecano.com.au

Vietnam

Lo H5-2(khu B1), duong D9, khu cong nghiep rach bap, xa an dien, thi xa ben cat, tinh binh duong, Vietnam
Contacts: Josiah Xia
Mobile: +84 0913922780
Email: Josiah.Xia@dewertokin.com

Korea

Add: No. 506, Bomb Building, 617-3, Gajeong-dong, Seo-gu, Incheon, Korea.
Zip Code: 22731
Contact: Amos An
Mobile: +82-10-6865-0599
E-mail: amos.an@dewertokin.com

Japan

Add: 52 Saiwai-Cho 420-0067 Shizuoka-City
Contact: JR Piao
Mobile: +81-90-6507-0205
E-mail: jr.piao@dewertokin.com
Web: www.dewertokin.com/ja/

Malaysia / India

Singapore / Thailand

Indonesia

Add: No. 22A-1, Blok 22A, Level1, Empire Galleri, Jalan Empayar/KU1 off Persiaran Sultan Ibrahim, 41150 Klang, Selangor, Malaysia
Zip Code: 41150
Contact: Vincent Xiong
Mobile: +86-18867665137
E-mail: vincent.xiong@dewertokin.com

Brazil

DewertOkin Latin America
Address: Av. Prof. Alceu Maynard de Araujo, 185, São Paulo, SP
Zip Code: 04626-160
Contact: Adriana Shinzato
E-mail: vendas@dewertokin.com.br
Tel: +55.11.56434190
Web: www.dewertokin.com.br



DEWERT Global Service Around the World

Over 40 years of experience.



Follow us: DewertOkin

