

Powered by **OKIN**

Since 1982



# **BEDDING SYSTEMS**

System Solutions for Bedding Applications

## DEWERTOKIN TECHNOLOGY GROUP

DewertOkin Technology Group Ltd. is a subsidiary of Phoenix Mecano Group in Switzerland. Its two brands, Dewert and OKIN, are originated in North Rhine-Westphalia, Germany, counting over 40 years of history. With 5 production bases in Asia-Pacific and Europe, and a total of nearly 3,000 employees, DewertOkin provides integrated hardware and software solutions for Smart Home, Smart Healthcare, Smart Office and other scenarios.

- Smart Manufacturing
- Production Real-time Traceability
- Global Supply Chain
- Fast Delivery Guarantee



## ONE-STOP SOLUTION FOR SMART FURNITURE

Under the brand OKIN you can find a wide range of products for smart furniture (such as motion upholstery, massage chairs, theatre seating, recliners and adjustable beds) and adjustable office desk and chair systems. Whereas the brand Dewert offers high performance products for medical applications (such as medical and nursing beds).

The first in the industry to propose a One-stop Smart Solution concept, our company serves over 1/5 of the world's smart furniture manufacturers and is the preferred supplier of many world-class brands. With a presence in over 28 countries and regions around the world, DewertOkin is a true industry leader.



Over 40 years of experience

Over 40 years focusing on the development and innovation of One-stop Smart Solutions. 5 innovative R&D centers around the world with post-doctoral workstations as the core. Over 1,500 patents, including more than 900 patents for inventions.



- In May 2021, set up the first high-level national laboratory in the industry accredited by China National Accreditation Service for Conformity Assessment (CNAS).
- Awarded the National High-tech Enterprise Certificate & National IP Advantage Enterprise, and is the main drafting unit of the national light industry and Zhejiang manufacturing group standards.
- Approved by authoritative certification institutions.



# One-Stop Solution for Motion Furniture



ACTUATOR  
JLDQ.19

USB CHARGER SOCKET  
PO.02



UNDERBED LED STRIP LIGHT  
R5.113



MASSAGE MOTOR  
MM.01.01



CONTROL BOX  
CB.37.22

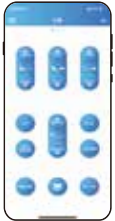
ACTUATOR  
JLDQ.20



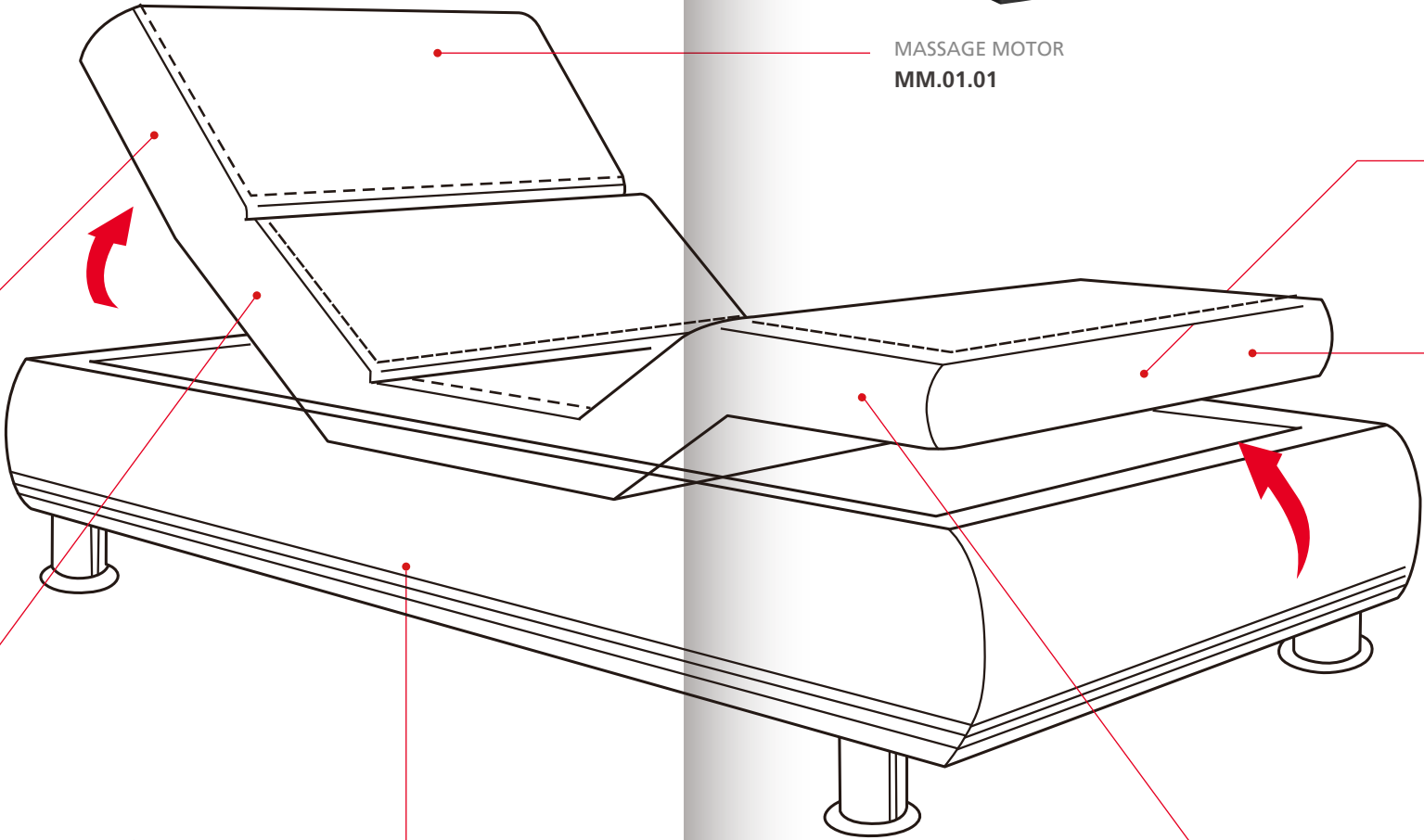
POWER SUPPLY  
PW.30



REMOTE CONTROL  
RF.67



BLUETOOTH 5.0 CONTROL SYSTEM







# POWERED BY OKIN



Noiseless



Powerful



Stable

## JLDQ.19

## Actuators



Minimum installation size	Stroke + 150mm
Load capacity	6000N max
Noise	≤50dB
Certifications	UL, FCC, UKCA, CE, CB

## JLDQ.19C



Minimum installation size	Stroke + 150mm
Load capacity	6000N max
Noise	≤50dB
Certifications	UL, FCC, UKCA, CE, CB

JLDQ.14B



JLDQ.20



Actuators

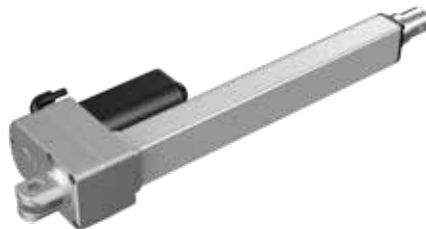
Minimum installation size	Stroke + 135mm	Stroke + 135mm
Load capacity	3000N max	4000N max
Noise	≤50dB	≤50dB
Certifications	UL, FCC, IC, UKCA, CE	UL, FCC, UKCA, CE

JLDQ.22



Clevis available in different rotations (0°/45°/90°/135°) and materials (plastic / zinc alloy)

JLDQ.32



Minimum installation size	Stroke + 150mm	Stroke + 130mm
Load capacity	6000N max	3500N max
Noise	≤50dB	≤50dB
Certifications	UL, FCC, UKCA, CE	CE, UL

JLDQ.34



DA.29



Actuators

Minimum installation size	Stroke + 150mm	Stroke + 168mm
Load capacity	6000N max	8000N max
Noise	≤50dB	≤50dB
Certifications	CE, UL	CE, ICE

Betadrive



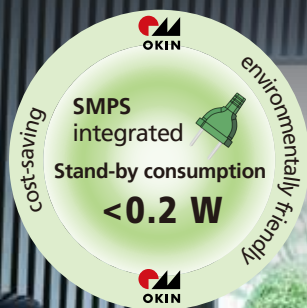
Deltadrive



Minimum installation size	Stroke + 157mm	Stroke + 180mm
Load capacity	6000N max	6000N max
Noise	≤50dB	≤50dB
Certifications	UL, CE, CB	UL, CE, CB

# DOUBLE DRIVES

- In case of power failure, a 9V battery can be connected to set the bed back to flat position.
- Advanced energy-saving integrated design technology: less than 0.2W standby power consumption.
- Thanks to a built-in SMPS and the wide range voltage input (100-240V AC), OKIMAT 6 can be safely used worldwide.



## OKIMAT4+2 EPS RF-BT Memory Massage

Double Drives



Input	100-240 V
Stroke range	69mm, 74mm, 87mm
Minimum installation size	581mm
Load capacity	6500N max
Speed	3.2mm/sec max
Optionals	Integrated RF / Memory positions Integrated underbed light Ports for 3rd / 4th actuators and massage motors Dedicated MFP port for external LED USB charger and massage motors

## OKIMAT6 RF-BT



Input	100-240V
Stroke range	48mm, 69mm, 74mm, 87mm
Minimum installation size	581mm
Load capacity	6000N max
Speed	3.9mm/s max, 4.5mm/sec max
Backup battery	9V

Plug types

CHN, US, JP, EU, UK, AUS plugs available on customer request





# Customization

OKIN Provides You With Your Own Handset

- Stylish design
- Easy to use
- Sensitive buttons
- Customizable functions



Our team can help you make your vision become reality - from design to production, we have everything you need to create your own personalized handset.

## RF.67

## Wireless Handsets



- 7 / 9 / 16 / 19 / 21 buttons, controls 2-5 actuators
- White backlight
- One-touch Flat and Zero-G position buttons
- Preset memory positions: 1-6
- Optionals: Flashlight, UBL, Child safety lock, Pair button, Massage

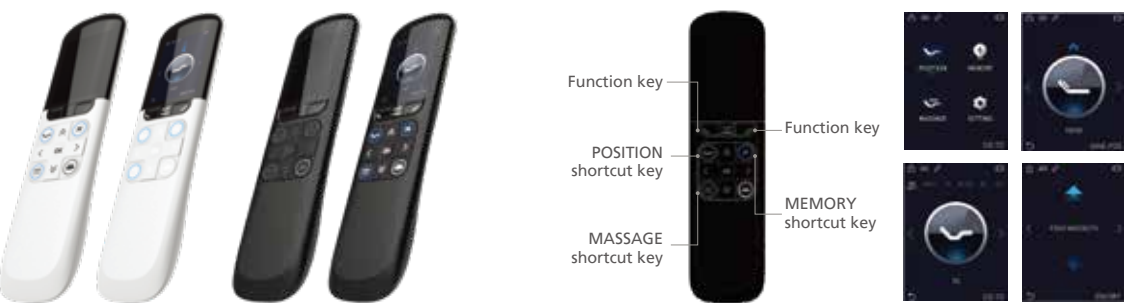
## RF.64



- 11 / 20 / 22 buttons, controls 2-5 actuators
- White / Blue backlight
- One-touch Flat and Zero-G position buttons
- Preset memory positions: 1-6
- Side switch to control bed A or bed B or bed A+B
- Optionals: UBL, Child safety lock, Flashlight, Massage

RF.58

Wireless Handsets



- Color display + 12 buttons, controls 2-5 actuators
- White backlight
- One-touch Flat position button
- Preset memory positions: 1-6
- Optionals: UBL, Child safety lock, Massage

RF.51

Wireless Handsets



- 11 / 19 / 21 buttons, controls 2-5 actuators
- White backlight
- One-touch Flat and Zero-G position buttons
- Preset memory positions: 1-6
- Optionals: Flashlight, UBL, Child safety lock, Pair button, Massage

RF.56



- 11 / 14 / 20 / 24 buttons, controls 2-5 actuators
- White backlight
- One-touch Flat and Zero-G position buttons
- Preset memory positions: 1-6
- Optionals: Flashlight, UBL, Child safety lock, Pair button, Massage

RF.50



- 11 / 17 / 19 / 22 buttons, controls 2-5 actuators
- White backlight
- One-touch Flat and Zero-G position buttons
- Preset memory positions: 1-6
- Optionals: UBL, Child safety lock, Pair button, Massage



RF.34

Wireless Handsets



- 3 / 5 / 7 / 9 buttons, controls 1-4 actuators
- Blue / White Backlight
- One-touch Flat and Zero-G position buttons
- Preset memory positions: 1-6
- Optionals: Flashlight, UBL, Child safety lock, Pair button

RF.29



- 11 buttons, controls 2-5 actuators
- No backlight
- One-touch Flat and Zero-G position buttons
- Preset memory positions: 1-6
- Optionals: Flashlight, UBL, Child safety lock, Pair button, Massage

RF.28

Wireless Handsets



- 7 / 9 buttons, controls 2-4 actuators
- Blue backlight
- One-touch Flat and Zero-G position buttons
- Preset memory positions: 1-6
- Optionals: Flashlight, UBL, Child safety lock

RF.27



- 11 / 19 buttons, controls 2-5 actuators
- Blue backlight
- One-touch Flat and Zero-G position buttons
- Preset memory positions: 1-6
- Optionals: Flashlight, UBL, Child safety lock, Pair button, Massage

Proline



2 / 4 / 6 / 8 buttons, controls 1-3 actuators

Baseline



2 / 6 buttons, controls 1-2 actuators

Wired Handsets

HS.33



6 buttons, controls 2 actuators

Wired Handsets

HS.12



2 / 4 buttons, controls 1-2 actuators

HS.13



2 / 3 / 4 / 5 / 6 / 7 buttons, controls 1-3 actuators

RF ECO SET



2 / 6 buttons, controls 1-2 actuators  
Two single beds synchronization with wireless sync

RF LITE SET



2 / 6 buttons, controls 1-2 actuators  
Two single beds synchronization with wireless sync  
One-touch Flat position button



# CONTROL BOXES



Integrated Controls



Bluetooth®



Reliable Quality



Low Power Consumption

CB.37.21



- 2 actuators, 6 present memory positions
- 1 port for massage motor or UBL
- Wired synchronization
- RF&BT dual-mode communication, Built-in Bluetooth
- Hall sensor actuators available
- Optionals: OTA, Low-power consumption, Voice control

CB.37.22



- 2 actuators, 6 present memory positions
- 2 ports for massage motor (2-pin port direct connection)
- Wired synchronization
- RF&BT dual-mode communication, Built-in Bluetooth
- Hall sensor actuators available
- Optionals: OTA, Low-power consumption, SmartSleep Anti-snoring System, Sonic Massage System, Voice control, USB charger, RGB UBL

CB.37.42



- 3-4 actuators, 6 present memory positions
- 2 ports for massage motor (2-pin port direct connection)
- Wired synchronization
- RF&BT dual-mode communication, Built-in Bluetooth
- Hall sensor actuators available
- Optionals: OTA, Low-power consumption, SmartSleep Anti-snoring System, Sonic Massage System, Voice control, USB charger, RGB UBL

CB.37.62



- 5-6 actuators, 6 present memory positions
- 4 ports for massage motor (2-pin port direct connection)
- Wired synchronization
- RF&BT dual-mode communication, Built-in Bluetooth
- Hall sensor actuators available
- Optionals: OTA, Low-power consumption, SmartSleep Anti-snoring System, Sonic Massage System, Voice control, USB charger, RGB UBL



# POWER SUPPLIES

VI

Energy Efficiency Class

Safety Protection

Multiple Certifications

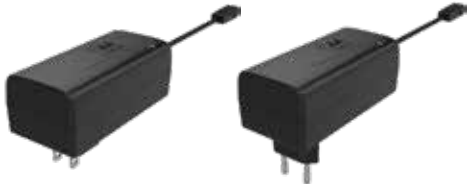
## Lithium Battery JLDP.11



Output: 20-29.4V/3.0A
Normal capacity: 1800mAh
Maximum discharge current: 5.0A
Overcharge, electric discharge and short circuit protection

## Wall plug SMPS PW.10

## Power Supplies



Input: 100-240V AC 50Hz~60Hz 2.5A
Output: 29V DC 1.5A / 1.8A / 2.0A
Overvoltage, overcurrent, overheating and short circuit protection

## Desktop SMPS PW.20






Input: 100-240V AC 50Hz~60Hz 2.5A
Output: 29V DC 1.8A / 2.0A / 3.0A
Overvoltage, overcurrent, overheating and short circuit protection

## Desktop SMPS PW.30






Input: 100-240V AC 50Hz~60Hz 2.5A
Output: 29V DC 1.8A / 2.0A
Overvoltage, overcurrent, overheating and short circuit protection
Back up battery compartment (2*9V batteries)

USB Charger Sockets

● PO.03.04	● PO.04.02/03	● PO.08.02
		
USB-A + USB-C	USB-A + USB-C 18W/10W	USB-A + USB-C
USB Input: 5V	USB Input: 29V	USB Input: 5V
USB Output: 5V/2A	USB Output: 5V/3A, 9V/2A, 12V/1.5A	USB Output: 5V/2A
		Small Size: 65.42x25.42mm

● PO.11.01/02	● PO.13.01/02	● PO.02.01
		
USB-A + USB-C 20W/10W	USB-A + USB-C 18W/10W	USB-A Charging Ports: 2
USB Input: 29V	USB Input: 29V	USB Input: 29V
USB Output: 5V/2.5A,9V/2A,12V/1.5A	USB Output: 5V/3A, 9V/2A, 12V/1.5A	USB Output: 1*5V/1.0A, 1*5V/2.1A

● PO.02.02	● PO.06	● PO.08.01
		
USB-A Charging Ports: 2	USB-A Charging Ports: 2	USB-A Charging Ports: 2
USB Input: 5V	USB Input: 29V	USB Input: 5V
USB Output: 5V/2A	USB Output: 1*5V/1.0A, 1*5V/2.1A	USB Output: 5V/2A
	Thin Type	Small Size: 65.42x25.42mm

Massage Motor Kits

● MM.01.01	● JLDQ.9.001	● MK.01
		
Input: 24-29V DC	Input: 24-29V DC	Rubber mat and ABS support bars
Speed: 2200RPM	Speed: 2240 / 2800RPM	Used to install the massage motor
Works with control box	Works with control box	

Underbed LED Light Strips

● FP.03.01	● R5.113
	
Input: 29V DC	Input: 29V DC
2.1DC Plug / 2*24AWG or 4-pin Plug	2.1DC Plug / 2*24AWG or 4-pin Plug
Light Color: Warm White (2800-3200k color temperature)	Light Color: Warm White (2800-3200k color temperature)
	RGB LED Strip (Optional)

● FP.07.03

Easy to install, can be placed on the bed side or the bed leg
Activated by human movement in a dark environment, automatically turns the underbed light on/off
Infrared detection sensor

Wired Offline Voice Control FP.08.07

Voice Control Systems



- Plug & play offline voice control, simple to use
- USB-A + USB-C 18W fast charge + wireless charger
- USB output: 5V 3A / 9V 2A / 12V 1.5A
- Wireless charger: 5W
- Emergency stop and flat function

Wireless Offline Voice Control FP.08.08



- Wireless offline voice control
- No cable connection for easier placement near the bed area
- 2.4 GHz RF
- Pairing and emergency stop buttons

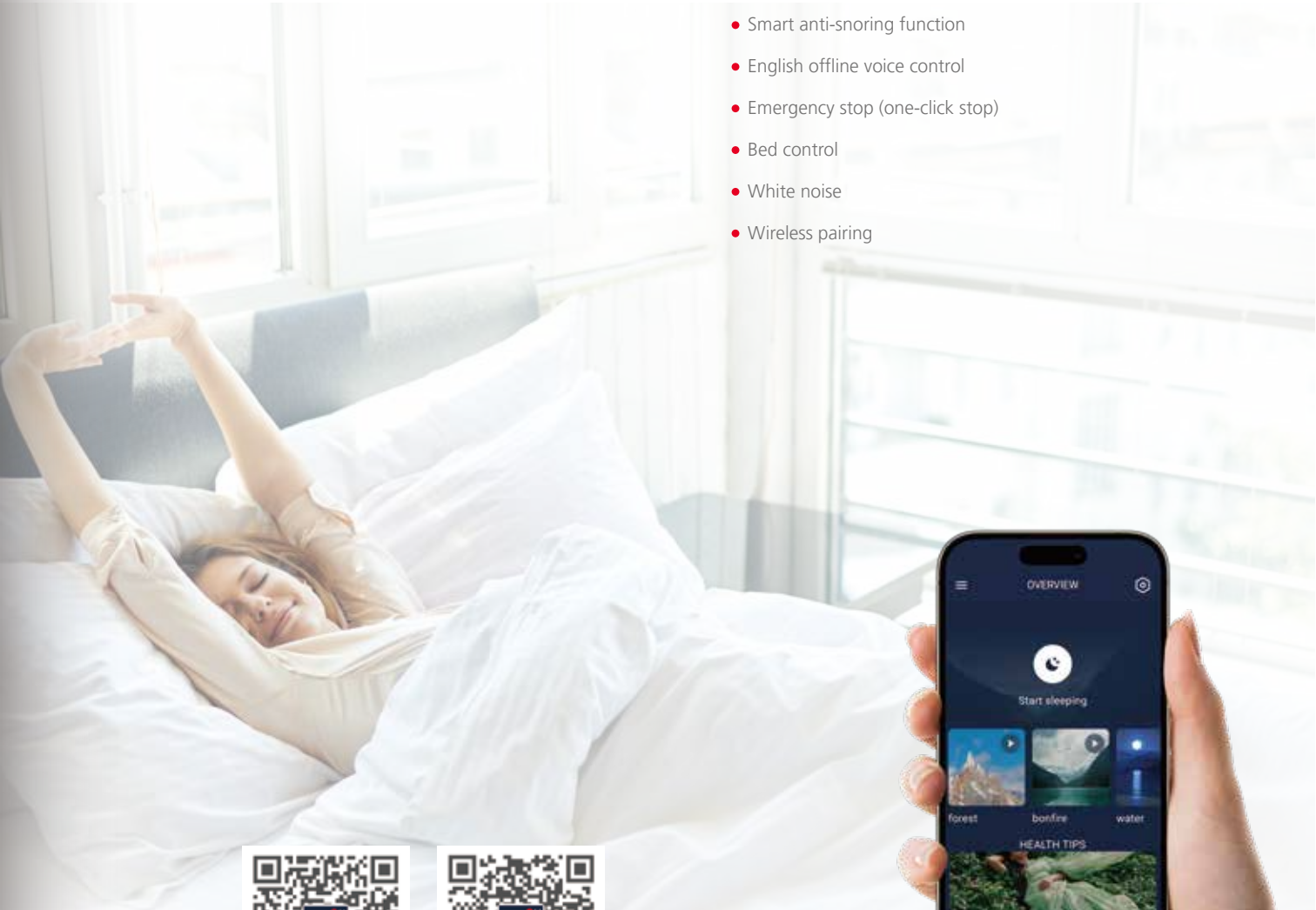
MFC Offline VCM FP.08.09

System Solutions

Offline voice control  
Smart anti-snoring function



- Smart anti-snoring function
- English offline voice control
- Emergency stop (one-click stop)
- Bed control
- White noise
- Wireless pairing



**iOS:**  
Snore Monitor



**Android:**  
Snore Monitor



Bluetooth Audio System

System Solutions

- **Invisible Aesthetics**  
Ultra-slim design, can be perfectly hidden under the bed, delivering sound right by your pillow. Ideal even for space-limited foldable beds.
- **Powerful Sound Field**  
Dual 20W stereo speakers with professional audio units, offering powerful sound in a small package - rich bass and clear highs.
- **Smart Control Convenience**  
Instant Bluetooth® connection to smartphones or TVs, transforming the bedroom into a private cinema in seconds, perfect for entertainment and promoting better sleep.
- **Safety and Durability**  
Low-voltage DC power supply ensures safety and reliability, providing long-lasting performance.

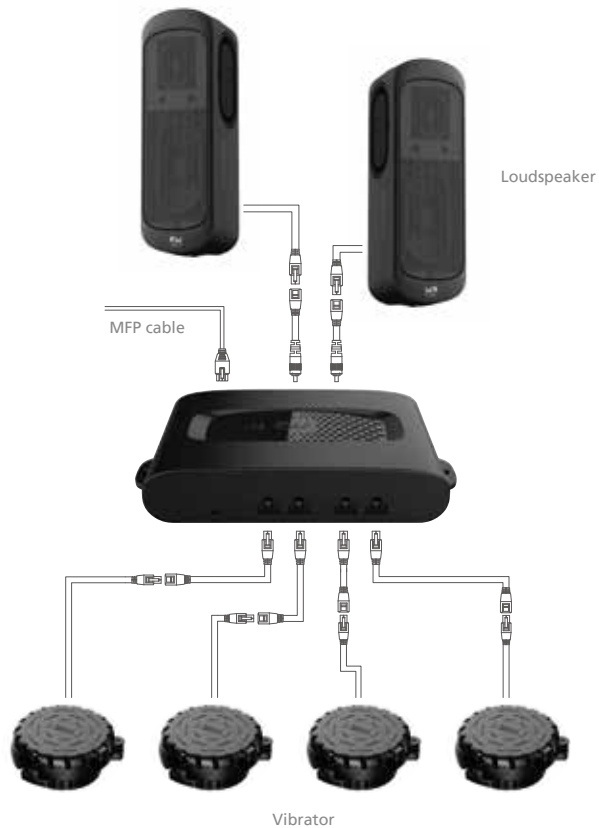


Sonic Massage System

System Solutions



- Synchronized Audio-Vibration, Dual Immersion
- Powerful Sound Stage, Shocking Auditory
- Smart Integration, Easy Control
- Multi-scenario experience and attentive companionship
- Low-Frequency Resonance, Health Care
- Powerful Vibrators, Deep Immersion
- Invisible Aesthetics, Versatile Compatibility



Improve sleep quality with real-time monitoring

ANTI-SNORING SYSTEM



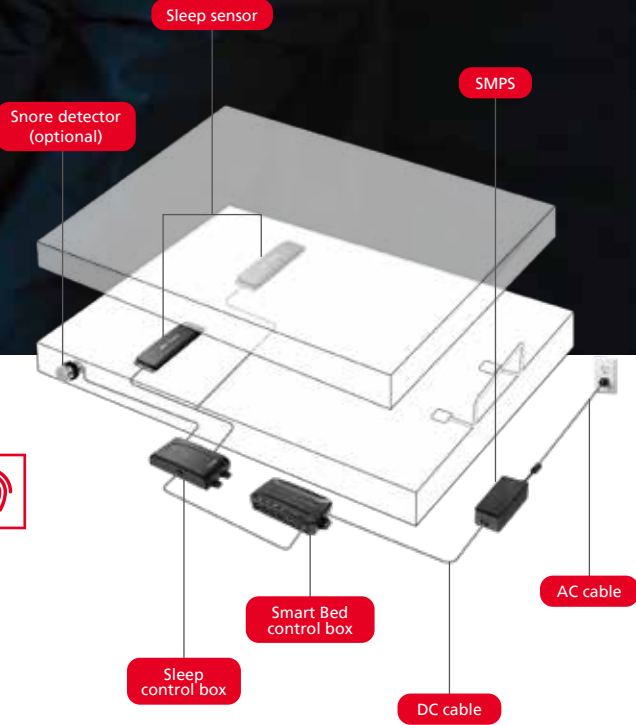
- Smart anti-snore function
- Monitor vital signs data in real time
- Sleep report
- Sleep music
- Smart bed control
- Smart wake-up function



IOS:  
OKIN SleepEase



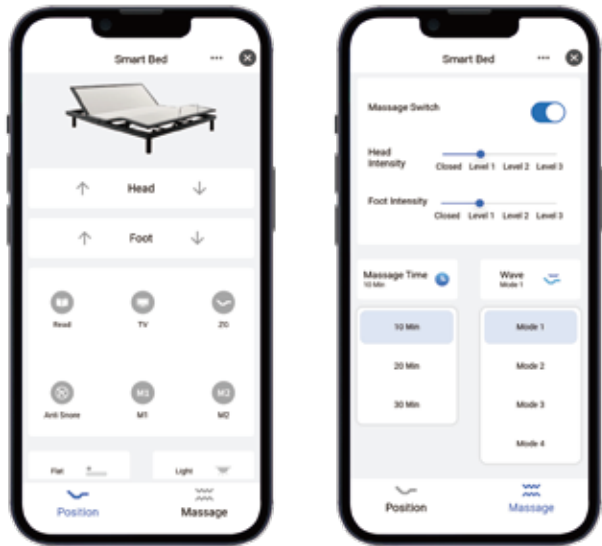
Android:  
OKIN SleepEase



Tuya IoT Access Solution

Enables smart beds connection to the Tuya IoT platform via a OKIN Wi-Fi dongle.

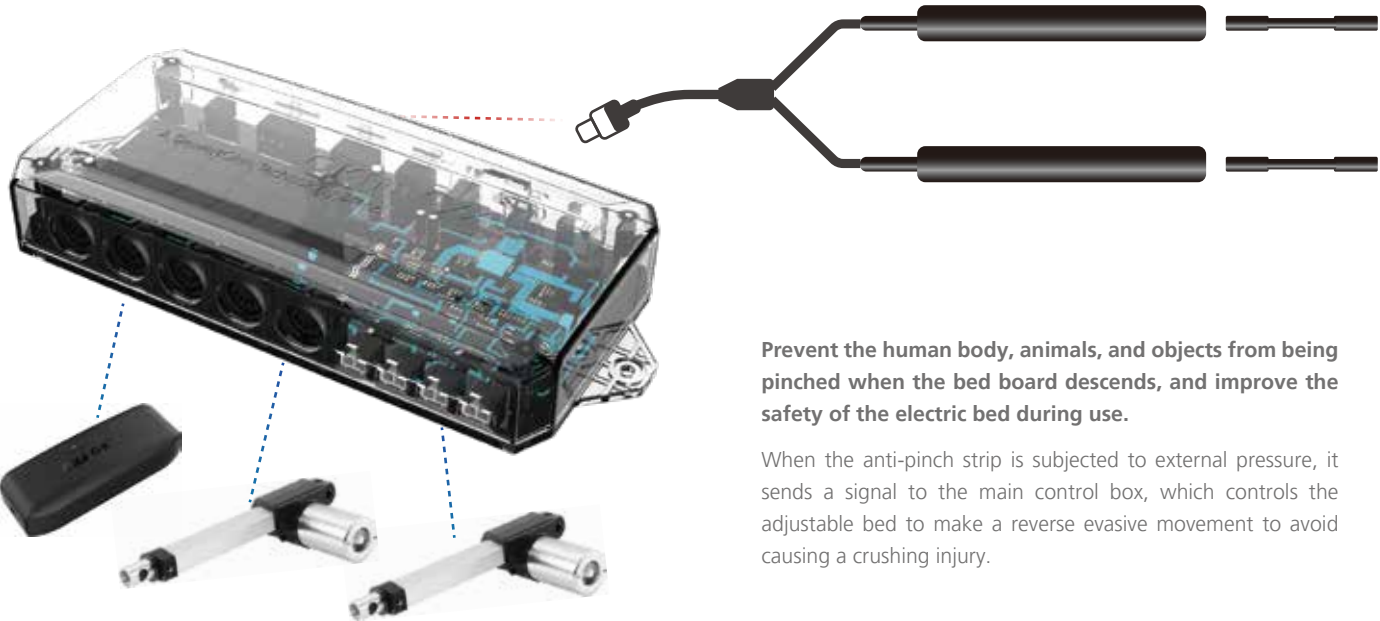
It allows users to create scene linkages and can be controlled via mobile phones, smart screens, smart speakers and other devices. It can also provide customized IoT access services, such as those for Amazon.



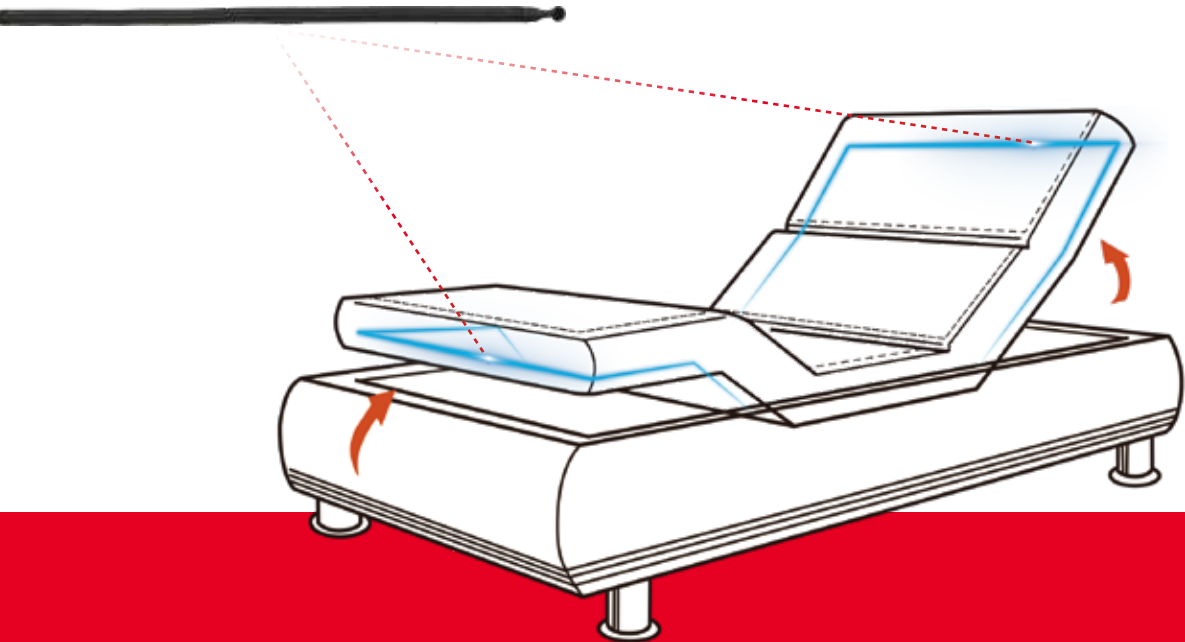


Anti-pinch System

System Solutions



Anti-pinch strips installed around the edge of the bed board



APP Customization

System Solutions

- Adopt Bluetooth® 5.0 technology with lower power consumption, less radiation and faster connection
- Smartphone control with stylish interface design
- Actuator control, lights control, massage control and alarm setup functions
- Customized interface design available
- Support Siri voice control



Personalized custom interface



App Store



Google Play



Huawei App Store



**China - Jiaxing**

Add: No.1507 Taoyuan Road, Gaozhao Subdistrict, Xiuzhou Development Zone, Jiaxing, Zhejiang, China 314031  
Service Hotline: +86-400-887-8573  
Tel: +86-(0)573-8228-1028  
E-mail: info@dewertokin.com  
Web: www.dewertokin.com

**China - Huizhou**

Add: Building C6, Zhantao Industrial Zone, Weibu Village, Qiuchang Town, Huiyang District Huizhou, Guangdong, China  
E-mail: info@dewertokin.com

**China - Taiwan**

Phoenix Mecano Hong Kong Limited Taiwan Branch  
Add: Room 4E-12, No.5, Hsin-Yi Road, Sec. 5, 11011 Taipei, Taiwan, China  
Contact: Allen Wang  
Phone: +886 2 27252582  
E-mail: allen@pmtwn.com.tw

**Korea**

Add: No. 506, Bomb Building, 617-3, Gajeong-dong, Seo-gu Incheon, Korea  
Zip Code: 22731  
Contact: Amos An  
Mobile: +82-10-6865-0599  
E-mail: amos.an@dewertokin.com

**Japan**

Add: 52 Saiwai-Cho 420-0067 Shizuoka-City  
Contact: JR Piao  
Mobile: +81-90-6507-0205  
E-mail: jr.piao@dewertokin.com  
Web: www.dewertokin.com/ja/

**Australia**

Add: 64 Butler Way, Tullamarine, Victoria, Australia, 3043  
Tel: +61 (3) 9338 56 99  
Fax: +61 (3) 9338 53 99  
E-mail: info@phoenix-mecano.com.au  
Web: www.phoenix-mecano.com.au

**Germany**

DewertOkin GmbH  
Weststrasse 1  
32278 Kirchleugern, Germany  
Tel: +49 5223 979 0  
Fax: +49 5223 751 82  
E-mail: info@dewertokin.de  
Web: www.dewertokin.com

**Vietnam**

Lot H5-2 (Zone B1), D9 Street, Rach Bap Industrial Park, Long Nguyen Ward Ho Chi Minh City, Vietnam  
Contact: Josiah Xia  
Mobile: +84 0913922780  
E-mail: Josiah.Xia@dewertokin.com

**Malaysia / India**

**Singapore / Thailand / Indonesia**

Add: No. 22A-1, Blok 22A, Level1, Empire Galleri, Jalan Empayar/KU1 off Persiaran Sultan Ibrahim  
41150, Klang, Selangor, Malaysia  
Contact: Ngkian Seng  
Mobile: +60 193150628  
E-mail: ngks@dewertokin.com

**United States**

Okin America INC.  
Add: 291 CDF Blvd Shannon, MS 38868  
Tel: +1 662-566-1000  
E-mail: orders.okin@okinamerica.com  
Web: www.okinamerica.com

**Brazil**

DewertOkin Latin America  
Add: Av. Prof. Alceu Maynard de Araujo, 185, São Paulo, SP  
Zip Code: 04626-160  
Contact: Adriana Shinzato  
Tel: +55.11.56434190  
E-mail: vendas@dewertokin.com.br  
Web: www.dewertokin.com.br



**With a presence in over 28 countries  
and regions around the world**

Over 40 years of experience.



Follow us:  DewertOkIn

